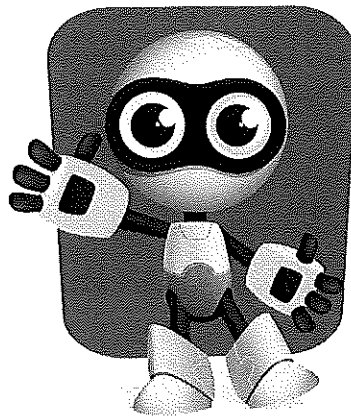




BOY SCOUTS OF AMERICA®
GREATER YOSEMITE COUNCIL

Cub Adventure @ McConnell **Full S.T.E.A.M. Ahead**



2017 *Leader/Parent* *Guide*



Cub Adventure @ McConnell Full S.T.E.A.M. Ahead!
2017

CUB SCOUT RESIDENT CAMPING

Resident camping is geared toward an introduction to the outdoor program of the Boy Scouts of America by providing council facilities and certified camp staff for our campers.

1. The objective is to provide Cub Scouts, parents, and other volunteer leadership with a meaningful fun experience and to strengthen parent-son relationships. Ideally, one parent should attend with each boy.
2. The length of camp will be 3 days and 2 nights.
3. Cub Scouts and parent(s) will stay in the same campsite, but sleep separately. In the event that a parent feels it necessary to stay in the same tent as their son, they may do so keeping in mind the following rule as set forth by Boy Scout of America. Boys may stay in the same tent with an adult so long as that adult is a parent or sibling. No other boys are to stay in that tent.
4. The camp provides a dining hall.
5. The facility used meets all Cub Scout camping standards and will be inspected by a National Standard criteria.
6. A trained staff is employed for the Cub Scout Resident Camp programs.
7. Program facilities include a swimming pool, BB gun and archery ranges, sports fields, nature area, etc., developed around Cub Scout needs and skills.

A Note from your Program Director:

As a first time program director, I am excited and honored to have the opportunity to provide you and your scouts with a fantastic Summer Camp experience. I've spent over 15 years involved in the Scouting program and know firsthand that Summer Camp is one of the truest forms of Scouting experience. The Boy Scout founder once said that a boy learns more from a week of camp than 6 months of sitting in a classroom and that rings true here at Camp McConnell. Your scouts and you will learn how to Scout safely while having fun and fulfillment from spending time reflecting and reconnecting with nature and each other. I hope that the fond memories made here last a lifetime and that your Scouts and parents come back to McConnell year after year in hopes of returning to a home away from home.

Nicholas Bryant
2017 C.A.M. Program Director

Cub Adventure @ McConnell Full S.T.E.A.M. Ahead!
2017

TABLE OF CONTENTS

Philosophy/Goals 2

Getting Ready for Resident Camp 4

Basic C.A.M.P. Facts 5

Tentative Schedule 6

Program Activities to be Offered 7

Roles/Expectations 8

What to Bring/What *NOT* to Bring 9

Camp McConnell Rules 11

Map/Directions to Camp Warren McConnell 12

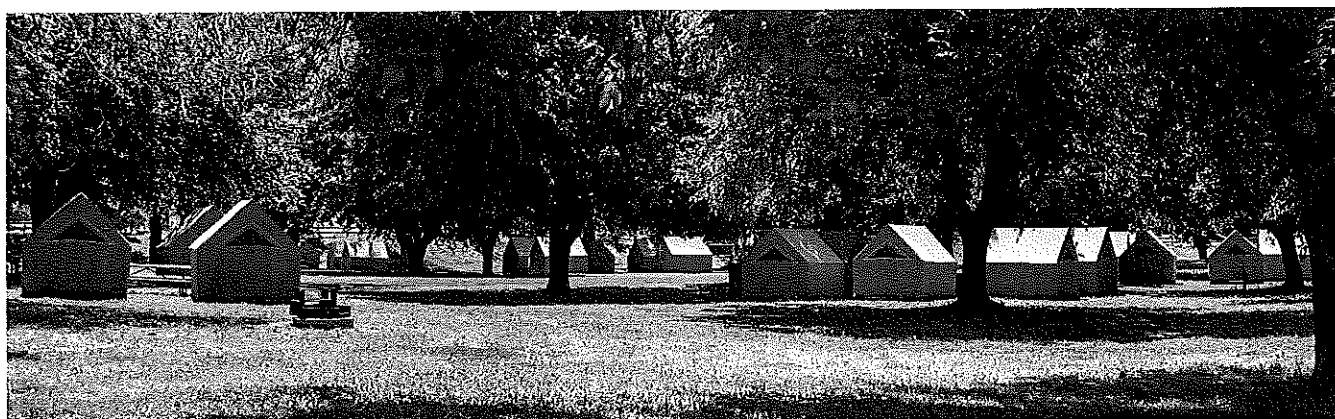
FORMS*

Youth Release Request/Permission for a Scout to Depart from the Premises 13

Authorization and Consent Form 15

*the Annual BSA Health and Medical Record (2014 Printing) may be accessed as follows:

- <http://www.scouting.org/scoutsorce/HealthandSafety/ahmr.aspx>
- ***NOTE THAT EACH PARTICIPANT, SCOUT AND PARENT ALIKE, MUST COMPLETE AND SUBMIT PARTS A and B.***
- If you do not have internet access you may obtain these forms from either Council Service Center



Cub Adventure @ McConnell Full S.T.E.A.M. Ahead!
2017

GETTING READY FOR RESIDENT CAMP

1. RECRUIT ENOUGH ADULTS FOR **TWO-DEEP LEADERSHIP**. TWO-DEEP LEADERSHIP IS REQUIRED AT ALL SCOUTING ACTIVITIES FOR SAFETY REASONS. ONE LEADER MUST BE AT LEAST 21 YEARS OLD, A SECOND LEADER AT LEAST 18 YEARS OLD. OF THE TWO, ONE MUST BE A REGISTERED SCOUT LEADER AND HAVE COMPLETED YOUTH PROTECTION TRAINING. IN ADDITION, CUB SCOUT RESIDENT CAMP REQUIRES THE FOLLOWING RATIOS:
 - ✓ TIGERS: 1 TIGER ADULT PARTNER FOR **EACH** TIGER
 - ✓ WOLVES/BEARS: 1 ADULT FOR EACH **THREE** SCOUTS
 - ✓ WEBELOS: 1 ADULT FOR EACH **FOUR** SCOUTS
2. **RESERVATIONS ARE ON A FIRST COME-FIRST SERVED BASIS. GET YOUR PAPERWORK IN AS SOON AS POSSIBLE TO INSURE THAT YOU CAN ENJOY THE EXPERIENCE.** FOR CUB SCOUT RESIDENT CAMP YOU MUST SUBMIT A \$60.00 DEPOSIT FEE PER YOUTH, \$35 PER ADULT AND \$30.00 DEPOSIT WITH THE BALANCE DUE BY JUNE 2ND. WEBELOS DEPOSIT IS \$115 PER YOUTH, \$70 PER ADULT. PRICE INCREASES AFTER.
3. IN ORDER TO HELP OFFSET THE BURDEN OF A UNIT SENDING THE REQUIRED NUMBER OF ADULT LEADERS TO MAINTAIN THE 1-TO-4 RATIO OF ADULTS-TO-SCOUTS, THE FEE FOR ADULTS IS WAVED **FOR EACH 4 SCOUTS REGISTERED FOR CAMP**. FOR EXAMPLE, A UNIT SENDING 8 – 11 SCOUTS WOULD GET **TWO LEADERS FREE**; 12 – 15 SCOUTS WOULD RESULT IN **THREE FREE LEADERS**, ETC.
4. MAKE SURE THAT TRANSPORTATION TO AND FROM CAMP IS ARRANGED. KNOW THE CAMP LOCATION. **CAR-POOLING IS STRONGLY ADVISED** DUE TO LIMITED PARKING AT CAMP.
5. **EVERYONE WITH A PULSE** MUST HAVE A COMPLETED **ANNUAL BSA HEALTH AND MEDICAL RECORD, PARTS A AND B** (2014 PRINTING) ON FILE AT CAMP. MAKE SURE THAT THEY ARE FILLED OUT BROUGHT TO CHECK-IN ON FRIDAY AFTERNOON. PLEASE MAKE AND RETAIN A PHOTOCOPY OF THE FORM FOR YOUR RECORDS.
6. **CAMPERSHIPS (FINANCIAL ASSISTANCE)** ARE AVAILABLE FOR YOUTH ATTENDING DAY AND RESIDENT CAMPS. APPLICATIONS ARE AVAILABLE ONLINE AND AT EITHER SERVICE CENTER. (Camperships are only granted if the Scout has sold 20 Greater Yosemite Council Camp Cards - more details about camp cards can be received by contacting the Scout Office or through your local District Executive)

Cub Adventure @ McConnell Full S.T.E.A.M. Ahead!
2017

BASIC C.A.M. FACTS

WHAT IS CUB ADVENTURE AT MCCONNELL RESIDENT CAMP? – C.A.M. is a three-day/two-night (four-day/three-night for Webelos who choose to stay the extra day) camping experience for ALL Cub Scouts and their accompanying adults. It is conducted by trained staff using the guidelines approved by the Boy Scouts of America.

WHO MAY ATTEND? - Any registered Cub Scout having completed Kindergarten (spring of 2017) but not completed 5th grade may attend. Enough adults must attend to satisfy the following ratios:

- ✓ TIGERS: 1 TIGER ADULT PARTNER FOR **EACH** TIGER
- ✓ WOLVES/BEARS: 1 ADULT FOR EACH **THREE** SCOUTS
- ✓ WEBELOS: 1 ADULT FOR EACH **FOUR** SCOUTS

ACTIVITIES – C.A.M. activities can be broken down into three main categories: physical, such as swimming; nature, such as geology and hiking; and skills, such as knot-tying and first-aid. The overall theme for Cub Adventure @ McConnell 2017 will be Full S.T.E.A.M. Ahead! Among the activities included will be: BB gun shooting, archery, swimming, crafts, nature hikes, campfires, and other activities and programs.

DATES – Two session of C.A.M.P. will be offered the summer of 2017:

- Session 1** June 23rd – 25th with Webelos staying through to the 26th (optional)
- Session 2** July 7th – 9th with Webelos staying through to the 10th (optional)

Note: C.A.M. must have at least 50 boys registered by May 31 or it may be cancelled.

COST - The fee for Cub Adventure at McConnell PREMIER is \$120 per Scout and \$65 per adult for those staying only 2 nights. For Webelos opting to stay the extra night the fee is \$180 per Webelos and \$100 per adult. This includes all meals, program supplies, a C.A.M. t-shirt, handicraft materials, a trained staff, and proper equipment.

REGISTRATION – Individual Scout and Adult registration must be done online at www.yosemitescouting.org . If a Pack will be submitting a Pack check for multiple participants then ONE registration should be completed. If individual families will be submitting payments to the Council then SEPARATE registrations should be completed.

CHECK IN/CHECK OUT - Check-in at camp will begin at 3:00 p.m. on the first day. Sunday check-out will be 11:00 a.m. Monday check-out for Webelos will be following lunch.

MORE INFORMATION - Additional information can be obtained by contacting the Greater Yosemite Council Service Center at (209) 545-6320. A pack promotion may be scheduled by calling your district camping representative listed in the *Council* newsletter or by calling the Scout Service Center.



Cub Adventure @ McConnell Full S.T.E.A.M. Ahead!
2017

TENTATIVE* SCHEDULE

Day 1 – Friday

3:00 – 6:00	Check-in, Camp Exploration, Swim Checks, Camp Set-Up
6:00	Flags
6:15	Dinner
7:00-7:30	Den Names, Flags, Yells
7:30-7:45	Range Safety
7:50	Staff Campfire
8:45	Evening Activities
10:00	Lights Out

Day 2 – Saturday

7:00	Reveille
7:45	Flags
8:00	Breakfast
8:45	Clean-up
9:00 – 12:20	Program
12:30	Lunch followed by Quiet Time
1:40 – 5:00	Program
5:00 – 5:45	Free time / Campfire Prep
5:45	Flags
6:00	Dinner
7:00-7:30	Free Time / Campfire Prep
7:45	Campfire
8:45	Evening Activities
10:00	Lights out

Day 3 – Sunday

7:00	Reveille
7:45	Flags
8:00	Breakfast
9:00-10:15	Rocket Launch
10:15-11:30	Clean-Up
11:45-12:15	Cub Scouts Award Ceremony (Webelos Free Time)
12:15	Lunch followed by Quiet Time
1:30 – 4:20	Program
4:30	Menu Prep for Cast iron Chef
5:45	Flags
6:00	Webelos Iron Chef Competition (Adult Dinner & Leader Update)
7:00	Evening activities
10:00	Lights out

Day 4 – Monday

7:00	Reveille
7:45	Flags
8:00	Breakfast
8:40-9:00	Clean-Up
9:00 – 11:50	Webelos-only Program
12:00	Lunch
12:45	Awards Ceremony

*this schedule subject to change

Cub Adventure @ McConnell Full S.T.E.A.M. Ahead!
2017

**SCOUT PROGRAM ACTIVITIES
TO BE OFFERED**

- Astronomy
- Crafts (Robotics, Chameleon Plates, Water Rockets, Whittling)
- Crystal Growing
- Garden Exploration & Seed Planting
- Hiking & Nature Observation
- Human Foosball
- Ice Cream Making
- Model Ecosystem Creation
- Shooting Sports (Archery, BB Guns)
- Swimming & Water Safety
- Volcano Explosions



ROLES / EXPECTATIONS

PROGRAM DIRECTOR

Cub Adventure @ McConnell Full S.T.E.A.M. Ahead!

2017

As your program director, my role is to provide a program for the Cub Scouts that will challenge them both physically and mentally, while at the same time provide an opportunity for them to have **TONS OF FUN** in a beautiful outdoor environment. I will monitor all program areas for both quality *and* enjoyment.

PROGRAM AREA STAFF

The Program Area Staff are expected to provide instruction and guidance in a *fun* and *safe* environment. Each of the staff will be selected based on interest and knowledge. Each is registered with BSA and has met all basic training standards for their position.

DEN LEADER

With the camp staff available and handling a number of the programs, what is the role of the pack leader?

It is not the staff's intent to "take over" the operation of your group. Their support, though, should give you more time to devote to the real task at camp ...**THE BOYS.**

A boy's development generally happens two ways at camp, as an individual and as part of a group.

As an individual, he will be learning through instruction by staff, activities, or projects, challenging himself at the swimming pool and building more self-confidence through the accomplishment of goals.

Your role as a leader will be to give him guidance and discipline as needed as he chooses his projects, encouragement as he tries new things, motivation to keep him on schedule with his goals, understanding and counseling if things are not going right.

As part of his den or pack, he will learn responsibility, cooperation, and leadership. That is a lot to ask of a young boy, but is also why camp is such a good experience.

Your role as a leader will be to help the staff members maintain discipline, and to make and carry out plans. Please remember that camp staff members at times also need a "breath of fresh air". Don't expect them to take responsibility for the den. **Maintaining discipline with your boys is your responsibility, not that of the camp staff.** Your pack needs to supply a boy to leader ratio of 3 to 1. Your den will also "travel" together at camp to meals and programs. While adult leaders will primarily be responsible for the boys from their pack, all leaders will work together and share some leadership.

Some activities will require leaders to help with instruction. These will include BB's, archery, crafts, etc. Please be sure leaders are aware of tools, etc. they should bring with them for crafts.

Good Luck! Boy development can be challenging, but it is also very rewarding. It's what makes our job as leaders worthwhile.

PARENT/GUARDIAN

Parents are an important part of the Camp experience. Cub resident camping is intended to be a Scout/parent activity. The staff is trained and prepared to provide a quality program and camping experience. They will not take over the operation of your group, but will support the parents and leaders. Parents and leaders may be asked to assist with some program areas. Boys at camp will be assigned some responsibilities for the cleanliness and operation of the camp. Parents and leaders will be expected to provide oversight for these responsibilities. Parents and leaders may also be asked to assist with the serving of meals.

CUB SCOUT

As part of his den, each Cub Scout will be given the opportunity to learn responsibility, cooperation, and leadership. That is a lot to ask of a young boy, but is also why camp is such a good experience. Scouts are there to enjoy their outdoor experience *while not robbing others of THEIR joy!!!* If a Scout cannot follow the rules they will face consequences, the most serious of which will be expulsion from camp.

WHAT TO BRING

Cub Adventure @ McConnell Full S.T.E.A.M. Ahead!
2017

(note: this list applies to all participants, unless otherwise noted)

PAPERWORK:

- Annual BSA Health and Medical Record (2014 printing), Parts A, B & C
- Authorization and Consent Form (Scouts only)
- Youth Release Request/Permission for Scout to Depart from Premises (if needed – Scouts only)

CLOTHING:

- Uniform: Class A field uniform shirt, neckerchief, slide, cap (optional), blue or olive pants or shorts, belt (registered adults should be bringing their uniforms, as well)
- Pants and shorts
- T-shirts (Scouting-related or plain, if possible)
- Nightwear
- Socks
- Underwear
- Shoes (at *LEAST* two pairs... *OPEN-TOED SHOES ONLY ALLOWED ON POOL DECK*)
- Sweater, jacket or sweatshirt

PERSONAL TOILETRY ITEMS:

- toothbrush, toothpaste (secured in a Ziploc bag with name marked on it)
- Comb and/or brush
- Towel, washcloth, facial tissue

PERSONAL ESSENTIALS:

- Water bottle, canteen or hydration unit
- Insect repellent (with DEET*)
- Sunglasses, sun block, lip balm

- Personal first aid kit
- Whistle
- Flashlight or headlamp with spare batteries
- Small day or fanny pack

PERSONAL GEAR:

- Sleeping bag or blankets
- Sleeping pad or air mattress (cots can be checked out for those who need them)
- Pillow
- Suitcase or duffle bag**
- Personal “mess kit” consisting of plate, bowl, cup, utensils for use during in-camp dinner.
- Pens or pencils and a notepad
- Swimming suit and gear
- Required prescription medications and/or over-the-counter drugs in original containers (as needed)

OPTIONAL ITEMS:

- Fishing gear
- Inexpensive camera
- Bible and/or prayer book
- Watch
- Inexpensive binoculars
- Handkerchief
- Small amount of money for the trading post

**you may have to carry items to campsite

***Insect repellent containing DEET has proven to be the most effective. We recommend formulas containing at least 35% DEET. These formulas will give up to 8 hour protection. You should know however, that water or perspiration will wash DEET off of the skin. Be prepared to re-apply as needed by bringing an ample supply.**

TENTS:

Platform canvas tents will be provided for all campers and adult leaders. However, please feel free to bring your own tent if you wish. **IMPORTANT:** Boy Scouts of America policy states that adults may share tents with their own child *only!!! No exceptions!*

If you are bringing your own tent, the following rules apply:

1. The tent should be placed adjacent to the Den Campsite.
2. The tent needs to have been treated with flame-retardant materials.
3. The tent is stenciled or has a sign on the front reading “NO FLAMES IN TENT”
4. Only battery operated devices are to be used in tents.

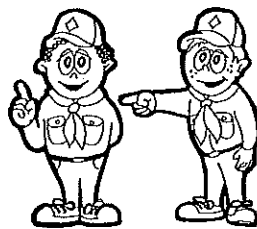
WHAT NOT TO BRING

Cub Adventure @ McConnell Full S.T.E.A.M. Ahead!
2017

Pets, firearms and/or ammunition – including BB and pellet guns, archery equipment, blowguns or slingshots, fireworks, narcotics or illicit drugs, alcoholic beverages, sandals or open-toed shoes, anything in aerosol cans, bicycles, sheath knives, hatchets, electronic equipment (hand-held game systems, iPods, etc.), lighters, excessive amounts of money or items of exceptional value.

FOOD:

NO FOOD IS TO BE STORED IN YOUR CAMPSITE. IF you need to bring food for dietary reasons please make arrangements for it to be stored in a secured location in the camp kitchens (connect with the camp cook upon arrival on Day 1). Non-perishables may be kept in your vehicles.



Cub Adventure @ McConnell Full S.T.E.A.M. Ahead!
2017

CAMP MCCONNELL RULES

All campers are expected to adhere to the 12 points of the Scout Law: A scout is trustworthy, loyal, helpful, friendly, courteous, kind, obedient, cheerful, thrifty, brave, clean, and reverent.

All campers shall wear shoes when moving about the camp. **NO BARE FEET OR OPEN TOED SANDALS!**

No cutting or carving in or on trees, picnic tables, buildings, etc.

NO GRAFFITI anywhere at camp.

All campers must submit a completed Personal Health and Medical Record upon arrival at camp. Forms may be returned at the conclusion of each session.

Swim checks are required for all campers. Times for swim-checks will be announced during check-in.

All vehicles will be unloaded and **BACKED IN** in the parking area. Only designated vehicles will be permitted on camp roads. Please lock your vehicle.

Visitors are welcome at Camp. **All visitors must check-in** with the Camp Director and secure a visitor tag before proceeding into the camp area. This is for the protection of the Scouts.

Propane and liquid fuels: Pursuant to BSA policy, extra propane tanks and liquid fuels may not be stored in campsites. The camp will secure these items in a safe location and make them available to campers as necessary. **Only battery operated lanterns may be used in tents.**

Upon arrival, all campers are to check-in at the check-in booth. If you have not paid in full, you must do so at this time. You must submit completed medical forms (if not already turned in) and permission slips for participation and early departure. Late arrivals must check-in with the Camp Director/Program Director immediately upon arrival for assignment to campsite.

Report ALL injuries to the Camp Health Officer immediately. In the event of serious illness or injury the Camp Director must also be informed.

GUEST MEAL FEES

Meals for guests and visitors are available at the following rates:

Breakfast..... \$6.00

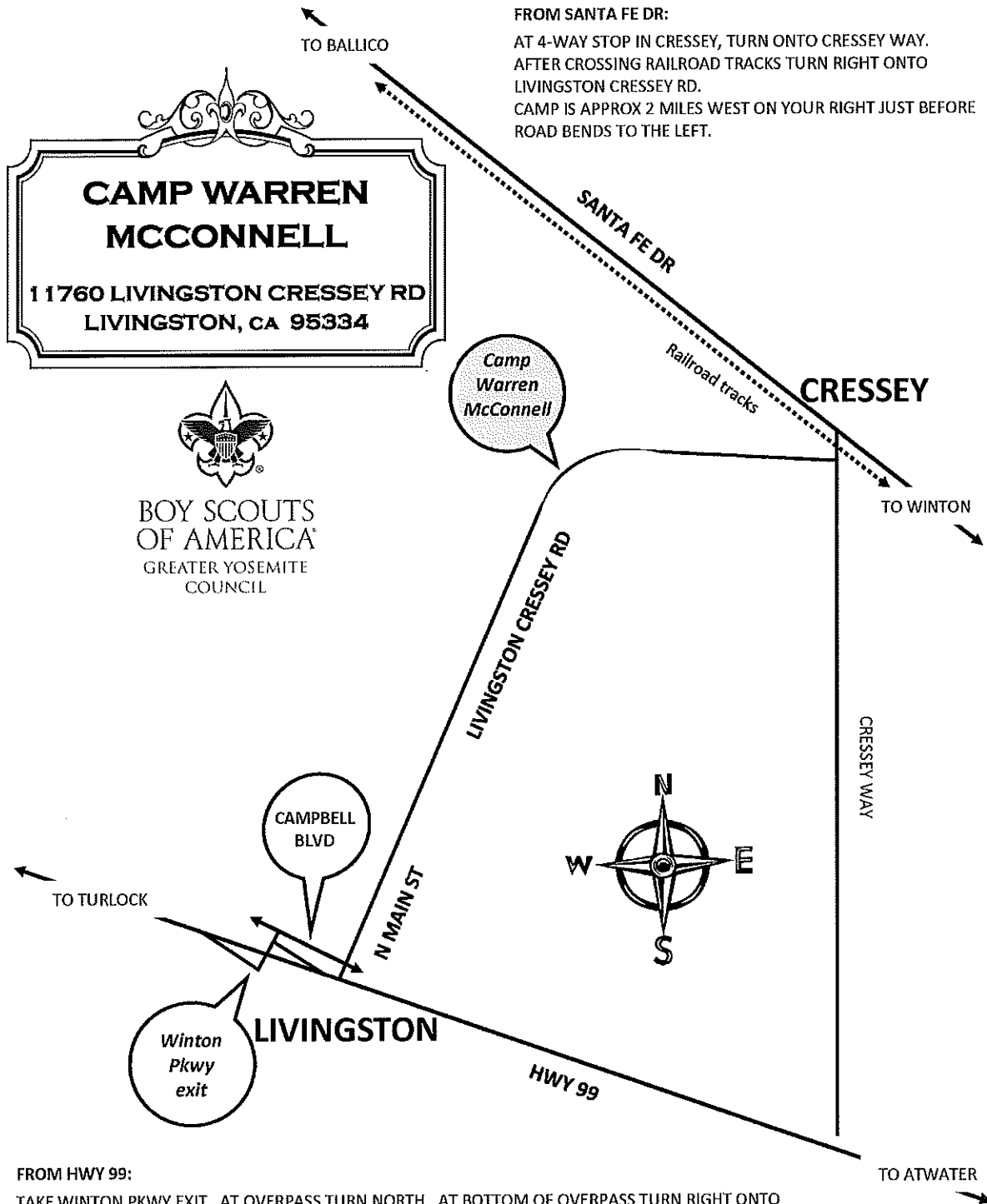
Lunch..... \$5.00

Dinner..... \$7.00

No charge for children under 3 years of age

Meal tickets may be purchased from the Camp Director/Program Director.

Cub Adventure @ McConnell Full S.T.E.A.M. Ahead!
2017



FROM HWY 99:

TAKE WINTON PKWY EXIT. AT OVERPASS TURN NORTH. AT BOTTOM OF OVERPASS TURN RIGHT ONTO CAMPBELL BLVD. AT 4-WAY STOP TURN LEFT ONTO N MAIN STREET. THIS WILL BECOME LIVINGSTON CRESSEY RD JUST OUTSIDE OF TOWN.

CAMP IS APPROX. 2.5 MILES FROM 4-WAY INTERSECTION—LOOK FOR WHITE FENCE ON YOUR LEFT AS ROAD BENDS TO THE RIGHT.

Cub Adventure @ McConnell Full S.T.E.A.M. Ahead!
2017

**YOUTH RELEASE REQUEST
PERMISSION FOR A SCOUT TO DEPART FROM THE PREMISES**

INSTRUCTIONS:

Youth desiring to leave camp prior to the Pack's departure or not as a part of the Pack must have a release signed by their parent(s)/guardian and approved by the unit leader at camp with the youth. Youth will normally only be permitted to leave accompanied by their parent(s)/guardian. The form below must be used in handling all such departures.

In an emergency, it may not be possible for a parent(s)/guardian to sign the release. In this event, sufficient information must be recorded attesting to the telephone call or means of communication by which word arrived, asking for the release of the youth. This information should document the person from whom the call was received, and give detailed reasons for the requested release.

REQUEST IS MADE THAT _____

HOME ADDRESS _____

CITY _____ STATE _____ ZIP _____

PACK NUMBER _____

BE PERMITTED TO LEAVE THE CONTINGENT FOR THE FOLLOWING REASON: _____

THE YOUTH IS TO LEAVE ON DATE: _____ TIME: _____

METHOD OF TRAVEL: _____

ACCOMPANIED BY: _____

THE YOUTH IS TO RETURN ON DATE: _____ TIME: _____

In signing the request for release, BSA and the youth's parent(s) or guardian(s) mutually acknowledge that upon the youth's departure from the camp the BSA or its representatives shall not be liable for any loss or injury to the youth's person or property.

Cub Adventure @ McConnell Full S.T.E.A.M. Ahead!
2017

**YOUTH RELEASE REQUEST
PERMISSION FOR A SCOUT TO DEPART FROM THE PREMISES (CON'T)**

This request is made by: (Parent's or guardian's signature required except as noted for emergency departure requests.)

PARENT/GUARDIAN SIGNATURE

_____ DATE _____

ADDRESS _____

TELEPHONE NUMBER: (H) _____ REQUEST MADE (DATE & TIME) _____
(B) _____

UNIT LEADER'S SIGNATURE OF APPROVAL: _____

ON-SITE REQUEST

Before leaving the camp, youth must check out with their unit leader and the camp headquarters.

APPROVALS:

SIGNED: _____ UNIT LEADER, UNIT # _____ DATE _____

SIGNED: _____ HEADQUARTERS DATE _____

Examples when used:
Scout leaves for baseball game,
birthday, vacation, funeral,
homesick, injury at camp, etc.

Examples when not used:
Field trip for a camp activity,
or other related Greater Yosemite Council
trips requiring the Scout to leave camp.

**IF YOU KNOW A SCOUT WILL BE LEAVING CAMP EARLY,
PLEASE HAVE THIS FILLED OUT BEFORE YOU ARRIVE.**

Cub Adventure @ McConnell Full S.T.E.A.M. Ahead!
2017

AUTHORIZATION AND CONSENT FORM

Pursuant to California Civil Code Section 25.8

Pursuant to California Penal Code Sections 12101 & 12552

I, the undersigned or legal guardian of _____ do hereby authorize the Camp Director of Camp Warren McConnell, Greater Yosemite Council, Boy Scouts of America or such substitute as they may designate as agent for the undersigned, to administer any x-ray examination, anesthetic, medical, dental or surgical diagnosis or treatment and hospital care for the above minor which is deemed advisable by and to be rendered under the general or special supervision of any physician and surgeon, licensed under the Provision of Medicine Practice Act, or of any dentist, licensed under the Dental Practice Act, whether such diagnosis or treatment is rendered at the office of said physician or dentist, at hospital, Scout camp or elsewhere.

This authorization will remain effective while the above minor is enroute to or from or involved or participating in any Boy Scout program or activity of the Greater Yosemite Council, Boy Scouts of America, unless revoked in writing by the undersigned, and delivered to the aforesaid agent.

SIGNATURE OF PARENT OR GUARDIAN	DATE
Home Phone (_____) _____	Work Phone (_____) _____

Further, the undersigned consent that the BB Shooting instructors of the above named Boy Scout Council may furnish a BB gun to the above minor for the purpose of instruction in the safe handling and shooting of firearms and related activities.

SIGNATURE OF PARENT OR GUARDIAN	DATE	YES NO Please Circle One
---------------------------------	------	-----------------------------