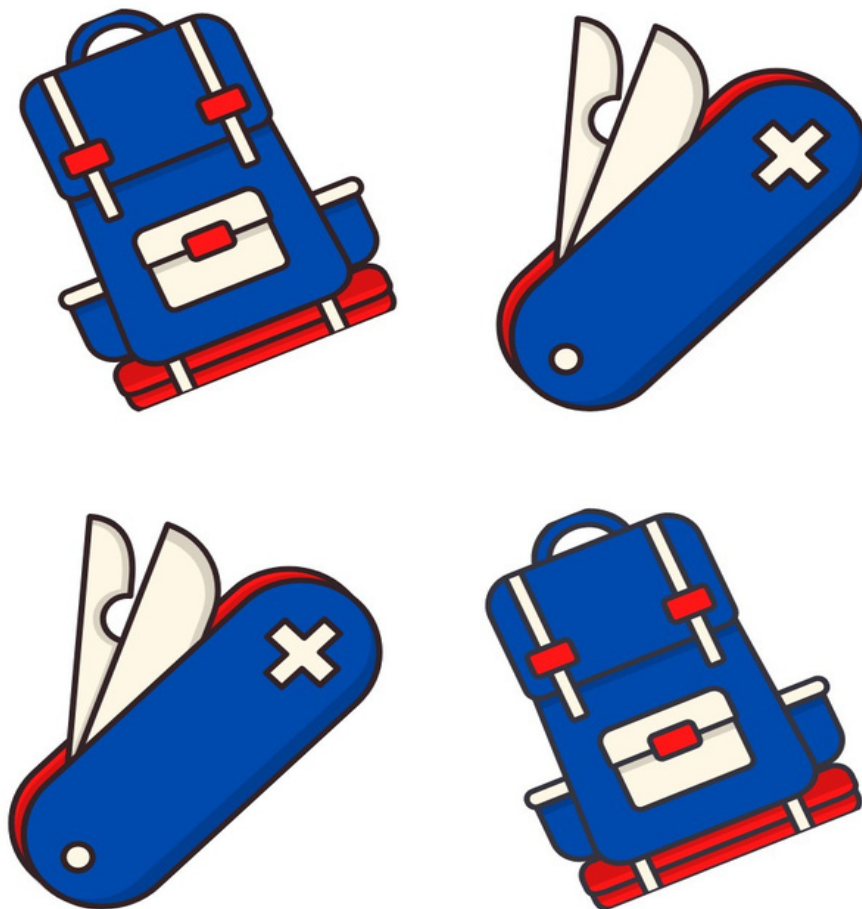


# Resource Guide 2022



A SCOUT IS: TRUSTWORTHY, LOYAL,  
HELPFUL, FRIENDLY, COURTEOUS, KIND,  
OBEDIENT, CHEERFUL, THRIFTY, BRAVE,  
CLEAN, AND REVERENT

## Index

Index.....	<a href="#">2</a>
Introduction.....	<a href="#">3</a>
Guide to Safe Scouting.....	<a href="#">4</a>
Chapter 1: Police Departments.....	<a href="#">5</a>
Chapter 2: Sheriff’s Departments.....	<a href="#">13</a>
Chapter 3: California Highway Patrol .....	<a href="#">16</a>
Chapter 4: Fire Departments.....	<a href="#">20</a>
Chapter 5: Parks and Lakes.....	<a href="#">27</a>
Chapter 6: River Rafting & Zipline .....	<a href="#">34</a>
Chapter 7: Museums.....	<a href="#">37</a>
Chapter 8: Bowling & Amusements Centers.....	<a href="#">40</a>
Chapter 9: Professional Sports Teams.....	<a href="#">44</a>
Chapter 10: Activities outside the Greater Yosemite Council.....	<a href="#">48</a>
Chapter 11: Interactive Farms, Nurseries and Fisheries.....	<a href="#">55</a>
Chapter 12: Animal Sanctuaries.....	<a href="#">58</a>
Chapter 13: Shooting Ranges.....	<a href="#">60</a>
Chapter 14: Winter Sports, Ice Rinks, Ski Areas & Resorts.....	<a href="#">63</a>
Chapter 15: Interesting Businesses to Visit.....	<a href="#">67</a>
Closing.....	<a href="#">69</a>
<a href="#">2</a>	

## Introduction

### *“Be Prepared” – Baden- Powell*

The pandemic has truly created an unprecedented time. Our hearts go out to anyone who has been impacted by the virus, either directly or indirectly. During this time, we want to assist you as a unit leader by providing ideas of venues to attend and help you continue to provide the outing in scouting.

Like most organizations, we are doing our best to secure the health and well-being of our scouts and their families. The information below is a compilation of locations such as first responder offices, entertainment venues, sports arenas, campgrounds, lakes, museums, etc. It should be noted that some of the information in this guide may have changed due to specific or ongoing covid-19 regulations. If unsure, feel free to use the links provided to get the most accurate and updated information about the venues.

Moments like this, remind us that we are all connected. We are called upon to be our best selves, with patience, understanding and compassion. Despite the many difficulties we are all facing, we would like to reassure you that the Greater Yosemite Council remains fully committed to doing our best to support our units and our scouts.

## Guide to Safe Scouting

All participants in official Scouting activities should become familiar with the Guide to Safe Scouting and applicable program literature to be aware of state or local government regulations that supersede the Boy Scouts of America practices, policies, and guidelines.

The Guide to Safe Scouting is an overview of Scouting policies and procedures gleaned from a variety of sources. Unit Leaders are expected to review the additional reference material cited to conducting such activities.

In situations not specially covered in the guide to safe scouting, activity planners should evaluate the risk or potential risk of harm, and respond with action plans based on community standards, the Scout motto, safety policies and practices commonly prescribed for the activity by experienced providers and practitioners.

### Disclaimer from the Greater Yosemite Council on COVID-19

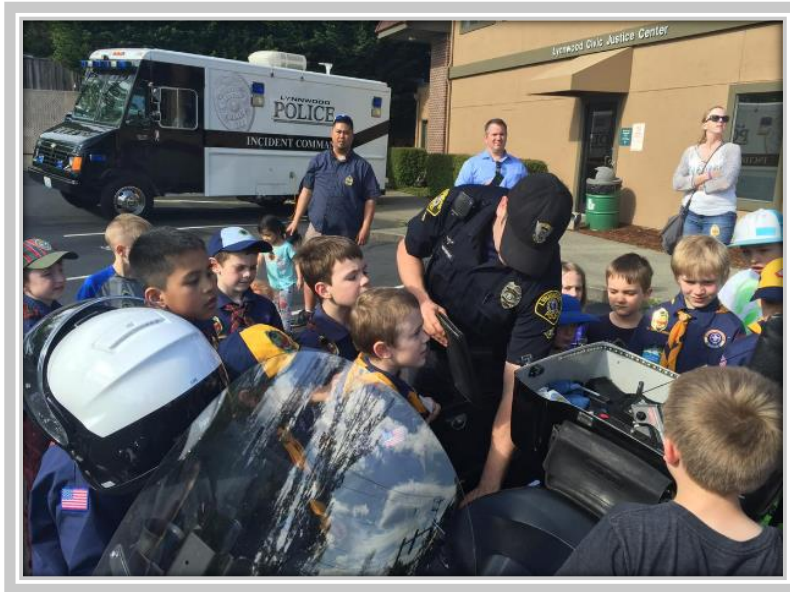
As always, the safety of our Scouts, volunteers, employees, and communities is our top priority. Our response to the coronavirus pandemic continues to be informed by the guidance of official bodies, including Center for Disease Control and Prevention, whose framework for mitigation for community groups is based on the level of community transmission of COVID-19, as well as the latest White House guidelines.

Units should look to the Restart Scout Checklist that outlines several minimum guiding protocols that adult leaders/volunteers must consider while working with local, state health departments, chartered organizations, and scouting families on when and how to resume meetings, service projects, camping, and all other official scouting activities.

Precautions and mitigations strategies are important, but they cannot eliminate the potential for exposure to COVID-19 or any other illness. Every member, volunteer and family must evaluate their unique circumstance and make an informed decision before attending in person activities. We hope this information will be helpful as you make that choice.

We thank you for helping meet the needs of our communities throughout these difficult times.

# Chapter One



## Police Departments in Greater Yosemite Council



---

## Angles Camp Police Department

Contact Theresa or Maria at 209-736-2567 for future tours or more information.

**Location:** 200 Monte Verde St. Angles Camp, CA 9522

**Phone:** 209-736-2567

**Website:** <http://angelscamp.gov/police/>

---

## Atwater Police Department

For future tours contact Sgt. Snider.

**Location:** 750 Bellevue Rd Atwater, CA 95301

**Phone:** 209-357-6384

**Website:** <https://www.atwater.org/departments/police/>

---

## Ceres Police Department

Contact Marcy the secretary to the chief at 209-538-5726 for future tours.

**Location:** 2727 3<sup>rd</sup> St Ceres, CA 95307

**Phone:** 209-538-5726

**Website:** <http://www.ci.ceres.ca.us/208/Police-Department>

---

## Dos Palos Police Department

For future tours email [rnceachin@dospalo.org](mailto:rnceachin@dospalo.org) or ask for Jessie.

**Location:** 1546 Golden Gate Ave Dos Palos, CA 93620

**Phone:** 209-392-2176

**Website:** <https://www.dospalospd.org>

---

## Escalon Police Department

Contact Office Manager to schedule a tour.

**Location:** 2040 McHenry Ave Modesto, CA 95320

**Phone:** 209-838-7093

**Website:** <http://escalon.hosted.civilive.com/government/departments/police>

---

## Galt City Police Department

Contact Partners Unit and ask for Lt. Richard Small at 209-366-7092.

**Location:** 455 Industrial Dr. Galt, CA 95632

**Phone:** 209-366-7000

**Website:** <http://www.ci.galt.ca.us/city-departments/police-department>

---

## Gustine Police Department

Contact Cindy in reception for future tours.

**Location:** 682 3<sup>rd</sup> Ave Gustine, CA 95322

**Phone:** 209-854-3737

**Website:** <https://www.cityofgustine.com/pview.aspx?id=13856&catid=649>

---

## Hughson Police Department

Contact through Stanislaus Sheriff's Office.

**Location:** 7018 Pine Street Hughson, CA 95326

**Phone:** 209-883-4054

**Website:** <http://hughson.org/our-government/city-departments/police-services/>

---

## **Lathrop Police Department**

Contact Community Resource Officer on duty to schedule a tour.

**Location:** 15597 7<sup>th</sup> St Lathrop, CA 95330

**Phone:** 209-858-5551

**Website:** <https://www.ci.lathrop.ca.us/police>

---

## **Livingston Police Department**

Contact Police Chief Secretary at 209-394-7917 for future tours.

**Location:** 1146 C St. Livingston, CA 95334

**Phone:** 209-394-7917

**Website:** <https://www.livingstoncity.com/SEC=B8C7A58D-1E5E-ADC4-718D6DF2DBBC>

---

## **Lodi Police Department**

For tours contact Lt. Richard Small at 209-366-7092.

**Location:** 215 W. Elm St. Lodi, CA 95240

**Phone:** 209-333-672

**Website:** <https://www.loadi.gov/215/Police>

---

## **Los Banos Police Department**

Contact Brenda in Police Services at 209-827-2500 for future tours.

**Location:** 945 5<sup>th</sup> St. Los Banos, CA 93635

**Phone:** 209-827-7070

**Website:** <https://www.losbanos.org/>



---

## Manteca Police Department

Contact Sgt. Ahuna 209-239-8401 for future tours.

**Location:** 1001 W Center St. Manteca, CA 95337

**Phone:** 209-239-8401

**Website:** <https://www.ci.manteca.ca.us/Police/Pages/Lobby-and-Counter-Closure.aspx>

---

## Merced Police Department

To schedule a tour please email Eugene at [drummonde@cityofmerced.org](mailto:drummonde@cityofmerced.org) or call 209-564-0583.

**Location:** 611 W 22<sup>nd</sup> Street Merced, CA 95340

**Phone:** 209-385-6912

**Website:** <https://www.cityofmerced.org/departments/police>

---

## Modesto Police Department

Contact training units for future tours.

**Location:** 600 10<sup>th</sup> St. Modesto, CA

**Phone:** 209-572-9500

**Website:** <http://www.modestogov.com/223/Police-Department>

---

## Newman Police Department

Contact Linda in reception for future tours.

**Location:** 1200 Main St. Newman, CA 95360

**Phone:** 209-862-2902

**Website:** <http://www.cityofnewman.com/departments/police.html>

---

## **Oakdale Police Department**

Contact Tara- assistant to the chief for future tours.

**Location:** 245 N. 2nd Ave Oakdale, CA 95361

**Phone:** 209-847-2231

**Website:** <https://www.oakdalegov.com/police>

---

## **Patterson Police Department**

Contact through the Stanislaus County Sheriff's Office.

**Location:** 33 S. Del Puerto Ave Patterson, CA 95363

**Phone:** 209-892-5071

**Website:** <http://www.ci.patterson.ca.us/199/Police-Department>

---

## **Ripon Police Department**

Tours are available. To Schedule a tour please contact at 209-599-2102 and ask for the Sgt. On Duty.

**Location:** 259 N. Wilma Ave Ripon, CA 95366

**Phone:** 209-599-2102

**Website:** <https://www.riponpd.org/>

---

## **Riverbank Police Department**

Contact through the Stanislaus Sheriff's Office.

**Location:** 6727 3<sup>rd</sup> St Riverbank, CA 95367

**Phone:** 209-869-7162

**Website:** <https://www.scsdonline.com/>

---

---

## Sonora Police Department

Contact Sgt. Hankins for future tours.

**Location:** 100 S. Green St. Sonora, CA 95370

**Phone:** 209-532-8143

**Website:** <https://www.sonorapd.com/>

---

## Stockton Police Department

Contact Officer Silva for future tours.

**Location:** 22 E. Market St. Stockton, CA 95202

**Phone:** 209-385-6912

**Website:** <http://ww1.stocktonca.gov/Departments/Police>

---

## Tracy Police Department

Contact Community Service Department at 209-831-6550 for future tours.

**Location:** 1000 Civic Center Dr. Tracy, CA 95376

**Phone:** 209-831-6550

**Website:** <https://www.ci.tracy.ca.us/?navid=53>

---

## Turlock Police Department

Contact Sgt. Steve Crawford at 209- 668-5550 extension 6708 for future tours.

**Location:** 244 N. Broadway Turlock, CA 95380

**Phone:** 209-668-5550

**Website:** <http://www.cityofturlock.org/policedepartment/>

---

**Valley Springs** (Uses the Jackson Police Department)

Please contact Sgt. Arevalos for future tours.

**Location:** 33 Broadway #D Jackson, CA 95642

**Phone:** 209-223-1771

**Website:** <https://ci.jackson.ca.us/city-services/police-department>

# Chapter Two



## Sheriff's Departments in Greater Yosemite Council



---

## Calaveras County Sheriff's Department

Contact front office for tours.

**Location:** 891 Mountain Ranch Rd. San Andreas, CA 95249

**Phone:** 209-754-6500

**Website:** <https://sheriff.calaverasgov.us/#gsc.tab=0>

---

## Mariposa County Sherriff's Department

Contact Public Information Officer Christine Mitchell.

**Location:** 5099 Old Highway Mariposa, CA 95338

**Phone:** 209-966-3615

**Website:** <http://www.mariposacounty.org/82/Sheriffs-Office>

---

## Merced County Sheriff's Department

Contact Darrell Allen Public Information Officer for youth activities.

**Location:** 700 W. 22end Street Merced, CA 95340

**Phone:** 209-385-7444

**Website:** <https://www.co.merced.ca.us/87/Sheriffs-Office>

---

## San Joaquin Sheriff's Department

Contact Public Information Officer Deputy Sandra Mendez on her cell 209-561-4816.

**Location:** 7000 Michael Canlis Rd French Camp, CA 95231

**Phone:** 209-468-4400

**Website:** <http://sjsheriff.org>

---

## **Stanislaus County Sheriff's Department**

Contact Sgt. Tom Letras or Luke Schwartz Public Information Officer for tours at 209-567-4401.

**Location:** 250 Hackett Rd Modesto, CA 95358

**Phone:** 209-525-7117

**Website:** <https://www.scsdonline.com/>

---

## **Tuolumne County Sheriff's Department**

Contact Crystal Anderson front Office at 209-533-5855.

**Location:** 18394 Bay Ave Tuolumne, CA 95374

**Phone:** 209-928-1703

**Website:** <https://www.tuolumnecounty.ca.gov/341/Sheriffs-Office>

# Chapter Three



## Highway Patrol Offices in Greater Yosemite Council





---

## **460 Atwater Office**

### **California Highway Patrol (CHP)**

**Location:** 1500 Bell Dr Atwater, CA 95301

**Phone:** 209-356-6600

**Website:** [https://www.chp.ca.gov/find-an-office/central-division/offices/\(460\)-merced](https://www.chp.ca.gov/find-an-office/central-division/offices/(460)-merced)

---

## **461 Los Banos Office**

### **California Highway patrol (CHP)**

Contact Officer Seistiers for free bike helmets.

**Location:** 706 West Pacheco Blvd Los Banos, CA 93635

**Phone:** 209-826-3811

**Website:** [https://www.chp.ca.gov/Find-an-Office/Central-Division/Offices/\(461\)-Los-Banos](https://www.chp.ca.gov/Find-an-Office/Central-Division/Offices/(461)-Los-Banos)

---

## **462 Mariposa Office**

### **California Highway Patrol (CHP)**

Contact Officer Chance for youth opportunities.

**Location:** 5264 Highway 49 Mariposa, CA 95338

**Phone:** 209-966-3656

**Website:** [https://www.chp.ca.gov/Find-an-Office/Central-Division/Offices/\(455\)-Mariposa](https://www.chp.ca.gov/Find-an-Office/Central-Division/Offices/(455)-Mariposa)

---

## **465 Modesto Office**

### **California Highway Patrol (CHP)**

Contact Officer Olsen for bike helmets.

**Location:** 4030 Kiernan Ave Modesto, CA 95356

**Phone:** 209-545-7440

**Website:** [https://www.chp.ca.gov/Find-an-Office/Central-Division/Offices/\(465\)-Modesto](https://www.chp.ca.gov/Find-an-Office/Central-Division/Offices/(465)-Modesto)

---

## **255 San Andreas Office**

### **California Highway Patrol (CHP)**

**Location:** 749 Mountain Ranch Rd san Andreas, CA 95249

**Phone:** 209-754-3541

**Website:** [https://www.chp.ca.gov/Find-an-Office/Valley-Division/Offices/\(255\)-San-Andreas](https://www.chp.ca.gov/Find-an-Office/Valley-Division/Offices/(255)-San-Andreas)

---

## **425 Sonora Office**

### **California Highway Patrol (CHP)**

**Location:** 18437 Fifth Ave Jamestown, CA 95327

**Phone:** 209-835-8920

**Website:** [https://www.chp.ca.gov/Find-an-Office/Central-Division/Offices/\(425\)-Sonora](https://www.chp.ca.gov/Find-an-Office/Central-Division/Offices/(425)-Sonora)

---

## **265 Stockton Office**

### **California Highway Patrol (CHP)**

**Location:** 2720 Wilcox Rd Stockton, CA 95215

**Phone:** 209-938-4800

**Website:** [https://www.chp.ca.gov/Find-an-Office/Valley-Division/Offices/\(265\)-Stockton](https://www.chp.ca.gov/Find-an-Office/Valley-Division/Offices/(265)-Stockton)

---

## **266 Tracy Office**

### **California Highway Patrol (CHP)**

**Location:** 385 West Grant Line Rd Tracy, CA 95376

**Phone:** 209-835-8920

**Website:** [https://www.chp.ca.gov/Find-an-Office/Valley-Division/Offices/\(266\)-Tracy](https://www.chp.ca.gov/Find-an-Office/Valley-Division/Offices/(266)-Tracy)

# Chapter Four



## Fire Departments in Greater Yosemite Council



---

## **Atwater Fire Department (Cal Fire)**

**Location:** 699 Broad Way Atwater, CA 95301

**Phone:** 209-357-6354

**Website:** <https://www.atwater.org/departments/fire/>

---

## **Angels Camp Fire Department**

**Location:** 1404 Vallecito Rd. Angles Camp, CA 95222

**Phone:** 209-736-4081

**Website:** <http://angelscamp.gov/fire/>

---

## **Ceres Fire Department**

Contact the secretary for tours.

**Location:** 3101 Fowler Rd Ceres, CA 95307

**Phone:** 209-538-5705

**Website:** <https://www.ci.ceres.ca.us/173/Fire>

---

## **Galt Fire Department**

**Location:** Station 45 at 229 5<sup>th</sup> St. Galt, CA 95362 OR Station 46 at 1050 Walnut Ave Galt, CA 95362

**Phone:** 916-405-7100

**Website:** <https://www.yourcsd/17/Stations-Facilities>

---

## **Gustine Fire Department**

Contact Engineer Harrington for tours.

**Location:** 686 3<sup>rd</sup> Ave Gustine, CA 95322

**Phone:** 209-854-6804

**Website:** <https://www.cityofgustine.com/pView.aspx?id=13858&catid=649>

---

## **Escalon Fire Department**

Contact Katie Secretary for Chief to schedule a tour.

**Location:** 1749 Coley Ave Escalon, CA 95320

**Phone:** 209-838-7500

**Website:** <http://www.escalonfire.com/>

---

## **Hughson Fire Department**

Contact Michael for tours. M-F are the best days for tours.

**Location:** 2315 Charles St Hughson, CA 95326

**Phone:** 209-883-2863

**Website:** <http://hughsonfire.com/>

---

## **Livingston Fire Department**

**Location:** 1430 C St Livingston, CA 95334

**Phone:** 209-394-7919

**Website:** <https://www.livingstoncity.com/index.asp?SEC=88466942-71AC-493E-AB1D-EA1B897A2F78&Type=Basic>

---

## Lodi Fire Department

Contact Mitchell for tours.

**Location:** 210 W. Elm St. Lodi, CA 95240

**Phone:** 209-333-6735

**Website:** <https://www.lodi.gov/281/Fire>

---

## Los Banos Fire Department

Contact Rochelle for tours. Scheduling should be done 3-4 weeks in advance. Tuesdays-Saturdays are best.

**Location:** 333 7<sup>th</sup> St Los Banos, CA 95635

**Phone:** 209-827-7025

**Website:** <https://www.losbanos.org/city-government/departments/fire/>

---

## Merced Fire Department

Tours are available Monday, Thursday, and Friday. Merced Fire has 5 stations 51, 52, 53, 54, 55.

**Location:** 99 East 16<sup>th</sup> Street Merced, CA 95340

**Phone:** 209-385-6891

**Website:** <https://www.atwater.org/departments/fire/>

---

## Modesto Fire Department

Contact Dominique; she represents the Modesto fire, Oakdale, Knights Ferry and Valley Home areas. Tours are suspended until further notice. Please contact Dominique at 209-342-4547 for more information.

**Location:** 409 12<sup>th</sup> St Modesto, CA 95354

**Phone:** 209-572-9590

**Website:** <https://www.modestogov/149/Fire-Department>

---

## Oakdale Fire Department

Contact Dominique; she represents the Oakdale Fire, Knights Ferry and Valley Home Fire areas. Tours are suspended until further notice. Please contact Dominique at 209-342-4547 for more information.

**Location:** Station 27 is at 455 S. Willowood Dr. Oakdale, CA 95361 OR Station 28 at 325 East G. St. Oakdale, CA 95361

**Phone:** Station 27 209-577-6260 OR Station 28 209-577-6263

**Website:** <https://www.oakdalegov.com/fire-department>

---

## Patterson Fire Department

Contact Amy for Tours.

**Location:** 344 W. Las Palmas Ave Patterson, CA 95363

**Phone:** 209-895-8130

**Website:** <http://www.ci.patterson.ca.us/214/Fire-Department>

---

## Riverbank Fire Department

Contact the on-duty administration clerk.

**Location:** 3324 Topeka St Riverbank, CA 95367

**Phone:** 209-869-7470

**Website:** <http://www.scfpd.us/>

---

## Salida Fire Protection District

Contact Pat for tours Monday-Saturday. Please schedule a week in advance.

**Location:** 4820 Salida Blvd Salida, CA

**Phone:** 209-545-0365

**Website:** <http://www.salidafire.com/>



---

## San Andreas Fire Department

**Location:** 37 Churchill Rd. San Andreas, CA 95249

**Phone:** 209-754-4693

**Website:** <https://usfiredept.com/san-andreas-fire-protection-district-20228.html>

---

## Sonora Fire Department

Contact Lisa for tours. Please schedule 2-3 weeks in advance. Monday-Fridays are the best days.

**Location:** 201 S. Shepherd St. Sonora, CA 95370

**Phone:** 209-532-7432

**Website:** <https://www.sonoraca.com/city-services/departments/fire-department/>

---

## Stockton Fire Department

Contact the fire prevention office at 209-937-8271 and request a public education form request to get a tour.

**Location:** 4010 Main St. Stockton, CA 95215

**Phone:** 209-937-8801

**Website:** <http://www.stocktongov.com/government/departments/fire/default.html>

---

## Turlock Fire Department

Contact Vanessa for future tours. Per Vanessa, tours should be scheduled a month in advance preferably on a Saturday at 10:00am.

**Location:** 244 N. Broadway Turlock, CA 95380

**Phone:** 209-668-5580

**Website:** <https://www.cityofturlock.org/firedepartment/aboutus/firestations/>

---

## Tracy Fire Department

**Location:** 835 N. Central Ave Tracy, CA 95376

**Phone:** 209-831-6700

**Website:** <https://www.firedepartment.net/directory/california/san-joaquin-county/tracy/tracy-fire-department>

---

## Valley Springs Fire Department (Calaveras Consolidated Fire)

**Location:** Station 2 is at 129 E. Highway 12 Valley Springs, CA 95252 OR Station 3 is at 6501 Jenny Lind Rd. Valley Springs, CA 95252

**Phone:** Station 2 209-772-1268 OR Station 3 209-786-2227

**Website:** <https://www.calcofire.org/fire-stations>

---

## Waterford Fire Department

### Station 24

**Location:** 129 E. St Waterford, CA

**Phone:** 209-869-7470

**Website:** <http://www.scfpd.us/operations/district-facilities/station-24/>

# Chapter Five



## Parks and Lakes in Greater Yosemite Council



## **Applegate Park Zoo (Merced Zoo)**

Days of operation are Thursday-Sunday \*\*\*may change due to covid regulations. Hours of operation are (Thursday-Friday 10:00am- 3:00pm). (Saturday- Sunday 10am-4pm).

**Location:** 1045 W. 25<sup>th</sup> St. Merced, CA 95340

**Phone:** 209-385-6840

**Website:** <http://www.mercedzoo.org/>

---

## **Calaveras Big Trees State Park**

(Reservations and Tours times may have changed due to covid restrictions)

Call 209-795-3840 to reserve a timeslot beforehand. Reservations must be made in advance.

Established in 1931, Calaveras Big Trees State Park preserves two groves of giant sequoias – the world’s largest Trees – in the North and South Groves.

Come see their beautiful Visitors Center at Calaveras Big Trees State Park. The park also features the South Grove, a five-mile hiking trip through a spectacular grove of giant sequoias in their natural setting. The park also houses two main campgrounds with a total of 129 campsites, six picnic areas and several miles of established trails.

**Location:** 1170 CA-4 Arnold, CA 95223

**Phone:** 209-795-2334

**Website:** <https://www.parks.ca.gov/?pageid=551>

---

## **Kiwanis Kiddieland (Owned and operated by the Kiwanis Club of Greater Merced)**

Kiddieland offers 6 rides: GoGator Rollercoaster, Horse Carousel, Safari Cars, Helicopter, Rocket Rides and The Kiddieland Train. Only specific times of the year. Please call to confirm their seasonal rides.

**Location:** 25 O St. Merced, CA 95340 (Next to Applegate Park Zoo)

**Phone:** 209-723-8307

**Website:** <https://kiwaniskiddieland.com/>

---

## Lake McSwain & Lake McClure in Snelling

The Lake McSwain camping, and recreation area is one Central California's best kept secrets. Featuring a marina, general store, and food service. Lake McSwain is an after bay and its water levels are not affected by local water conditions, making it the perfect spot for fishing, swimming, or relaxing family picnics by the water. Lake McSwain is also home to the Splash-N-Dash, an inflatable, on-water obstacle course that provides hours of fun!

McClure Point Camping & Recreation area is a favorite spot for thousands of yearly visitors. McClure Point overlooks the largest span of Lake McClure, offering the most water views of all the campgrounds. Not far from New Exchequer Dam, the area is located just seven miles up Lake McClure Road from Lake McSwain. Lake McClure is renowned for the best bass, trout, and salmon.

**Location:** 9090 Lake McClure Rd. Snelling, CA 95369

**Phone:** 1-855-800-2267

**Website:** <https://www.lakemcclure.com/camping/lake-mcswain-camping-recreation/>

---

## Lodi Lake

A fee is collected for every vehicle entry into the Lodi Lake Park whether a gate attendant is on duty or not. A self-serve pay station is available directly north of the entry gate.

Lodi lake beach features a large sandy beach area for plenty of fun in the sun. Check out their tiny tot water feature and spray pool. Lodi Lake also has a seasonal swimming area with lifeguards on duty. Open during the summer Memorial weekend through Labor Day weekend.

**Location:** 1101 W. Turner Rd. Lodi, CA 95242

**Phone:** 209-333-6742

**Website:** <https://www.lodi.gov/348/Lodi-Lake>

---

## Micke Grove Regional Park

Micke Grove has a zoo, lake, Japanese gardens, San Joaquin Historical Museum, and Fun Town. Fun town offers amusement rides, carnival inspired treats, and party packages.

**Location:** 11793 N. Micke Grove Rd. Lodi, CA 95240

**Phone:** 209-331-7400

**Website:** <http://www.sjparks.com/parks/micke-grove-regional-park.aspx>

---

## Micke Grove Zoo

Open Wednesday- Sunday 10am- 5pm; last entrance at 4:30pm. Maximum of 100 guests will be allowed in the zoo to ensure proper social distancing.

**Location:** 11793 N. Micke Grove Rd. Lodi, CA 95240

**Phone:** 209-331-2010

**Website:** <http://www.mgzoo.com/zoo/micke-grove/default.htm>

---

## New Hogan Lake

New Hogan Lake is the perfect place for camping, water sports, fishing, hiking, mountain biking, and horseback riding. There are 207 campsites available for reservation at three campgrounds. One campground can accommodate up to 50 people.

**Location:** 2713 Hogan Dam Rd. Valley Springs, CA 95252

**Phone:** 1-877-444-6777

**Website:** <https://corpslakes.erdc.dren.mil/visitors/projects.cfm?ID=L212390>

---

## Oak Grove Regional Park

This 180-acre park situated in a beautiful oak-forest setting features several amenities.

There is the Oak grove Lake, a 10-acre lake stocked with seasonal catfish and trout, paddleboats, and aqua cycles available for rent.

Oak grove Nature Center offers educational programs and exhibits detailing the flora and fauna native to the park. There are two nature trails; a 1.5 mile walk among old grove trees plus a quarter mile handicapped accessible trail.

Rental facilities include the indoor boat house and outdoor picnic shelters.

There is also an 18-hole disc golf course, children's playgrounds, and a youth campground available for youth camping. Horseshoe pits, picnic tables, and BBQ grills amenities are also available.

**Location:** 4520 W. Eight Mile Rd. Stockton, CA 95209

**Phone:** 209-953-8800

**Website:** <http://www.sjparks.com/parks/oak-grove-regional-park.aspx>

---

## Salt Springs Valley Reservoir

There are 80 acres of campground available on a first-come, first-served basis. You will find plenty of wood around to make a campfire and there's also group camping available.

Watercraft allowed include fishing boats, canoes, kayaks, and jet skis, but no waterskiing is allowed.

**Location:** 7422 Rock Creek Rd. Copperopolis, CA 95230

**Phone:** 209-785-7787

**Website:** <http://www.saltspringreservoir.com//>

---

## San Luis National Wildlife Refuge

Refuge auto tours routes, nature trails, and fishing access are open daily from a half hour before sunrise to a half hour after sunset. Visitor center includes an exhibit hall with interactive educational exhibits on wildlife, habitats, and tule elk viewing.

Tips to enjoy your visit: bring binoculars, spotting scopes, and a camera to enhance your visit. Contact the refuge for information on recent wildlife sightings. Remain on the vehicles auto tour routes for optimal viewing. Bring water, sunscreen, hats, and appropriate clothing for the weather conditions.

**Location:** 7367 S. Wolfsen Rd. Los Banos, CA 93635

**Phone:** 209-826-1197

**Website:** <https://www.fws.gov/refuge/sanluis/>

---

## San Luis Reservoir State Recreation Area

**Location:** 31426 Gonzaga Rd. Gustine, CA 95322

**Phone:** 209-826-1197

**Website:** <https://www.parks.ca.gov/?pageid558>

---

## South Lake Tulloch

Open now for restricted camping.

**Location:** 14448 Tulloch Rd. Jamestown, CA 95327

**Phone:** 209-881-0107

**Website:** <https://www.laketullochcampground.com/index.htm>

---

## Turlock Lake

**Location:** 22600 Lake Rd. La Grange, CA

**Phone:** 209-874-2056

**Website:** <http://www.parks.ca.gov/?pageid=555>

---

## Woodward Reservoir

For camping reservations, please visit [ReserveAmerica.com](http://ReserveAmerica.com). Park features campsites, concessions, restrooms, picnic Shelters, barbecues, picnic tables, fish cleaning station. For animal lovers, there is a great variety of wildlife.

**Location:** 14528 26 Mile Rd. Oakdale, CA 95361

**Phone:** 209-847-3309

**Website:** <http://www.stancountyparks.com/woodward-reservoir/>

---

## Yosemite Lake

*Scout Island is a site for youth groups only.*

Amenities include restrooms, BBQ area, picnic tables, and campfire ring. To make reservations call 209-385-7426.

**Location:** 5714 Lake Rd. Merced, CA

**Phone:** 209-385-7426

**Website:** <https://www.co.merced.ca.us/769/Lake-Yosemite>

---

## Yosemite National Park

**Location:** 9035 Villages Dr. Yosemite Valley, CA 9539

**Phone:** Camping Reservations 877-444-6777

Hi-Sierra Camp Reservations 559-253-5674

National Park Service 209-372-0200



Wilderness Reservation 209-372-0740

**Website:** <https://www.nps.gov/yose/index.htm>

# Chapter Six



## River Rafting and Ziplines in Greater Yosemite Council



---

## OARS California Rafting

**Location:** 2863 CA-49 Angles Camp, CA 95222

**Phone:** 209-736-2597

**Website:** <https://www.oars.com/contact/california-rafting/>

---

## River Journey Adventures

Open Monday-Sunday 9:00am-5:00pm.

**Location:** P.O. Box 1145 Oakdale, CA 95361

**Phone:** 209-847-4671

**Website:** <https://www.riverjourney.com>

---

## Sierra Mac River Trips

Marty McDonnell Outfitter Owner.

**Location:** P.O. Box 264 Groveland, CA 95321

**Phone:** 209-591-8027

**Website:** <https://www.sierramac.com/>

---

## Sunshine Rafting in Knights Ferry

We can accommodate groups of almost any size. Got a group of 10? 50? 200? Whatever size they can help you plan a special day.

**Location:** 18000 Covered Bridge Rd. Knights Ferry, CA 95361

**Phone:** 209-848-4800

**Website:** <https://www.raftadventure.com/>

---

## Sonoma Zipline Adventures

Personal Events or groups such as Birthdays, Sports Teams, Social Groups can be securely booked online by filling out the group form at the website or calling.

**Location:** 6250 Bohemian Hwy Occidental, CA 95465

**Phone:** 888-494-7868

**Website:** <https://www.sonomacanopytours.com/>

---

## Yosemite Ziplines and Adventure Ranch

Currently closed, plans on reopening in Spring of 2021.

**Location:** 4808 Highway 140 Mariposa, Ca

**Phone:** 209-742-4844

**Website:** <https://yosemiteziptours.com/groups/>

---

## Zephyr Whitewater Experience

Children 7 years and older can ride.

**Location:** P.O. Box 510 Columbia, CA 95310

**Phone:** 209-532-6249

**Website:** <http://zrafting.com/>

# Chapter Seven



## Museums in the Greater Yosemite Council and Surrounding Areas



---

## Castle Air Museum

Group tour rates: Youth 3-17 are \$7.50; Adults 18-61 are \$13.00.

Note: Group tours rates do not include VC-9 tours. VC-9 tours are an additional \$10.00 per person.

**Location:** 5050 Santa Fe Dr. Atwater, CA 95301

**Phone:** 209-723-2178

**Website:** <https://www.castleairmuseum.org/>

---

## California State Capitol Museum

Tours are available hourly. Admission is free. Open Monday-Friday 7:30am-6:00pm and weekends 9:00am-5:00pm.

**Location:** 1315 10<sup>th</sup> St. B-27 Sacramento, CA 95814

**Phone:** 209-324-0333

**Website:** <http://www.capitolmuseum.ca.gov/the-museum/general-info>

---

## California State Railroad Museum

Admission is \$12.00 for adults and \$6.00 for youth. Hours 10:00am-5:00pm.

**Location:** 111 I St. Sacramento, CA 95814

**Phone:** 916-445-7387

**Website:** <https://www.californiarailroad.museum/education/kids-corner>

---

## Haggin Museum

The Haggin Museum is free for tours. For tours, please email [akowalski@hagginmuseum.org](mailto:akowalski@hagginmuseum.org) three weeks in advance.

**Location:** 1201 N. Pershing Ave. Stockton, CA 95203

**Phone:** 209-940-6332

**Website:** <https://hagginmuseum.org/education/>

---

## **Railtown 1897 Historic Park**

**Location:** 10501 Reservoir Rd. Jamestown, CA 95327

**Phone:** 209-984-3953

**Website:** <https://www.railtown1897.org/visit/general-information/>

---

## **Stockton Children's Museum**

Has over 40 exhibits and an art studio for kids! Closed Monday and Tuesdays.

**Location:** 402 W. Weber Ave. Stockton, CA 95203

**Phone:** 209-465-4386

**Website:** <https://www.childrensmuseumstockton.org/>

---

## **Western Railway Museum**

Open Saturdays and Sundays open from 10:30am – 5:00pm.

**Location:** 5848 CA-12 Suisun City, CA

**Phone:** 707-374-2978

**Website:** <https://www.wrm.org/visit/feild-trips>

# Chapter Eight



## Bowling Venues and Amusement Parks in Greater Yosemite Council





---

## **Aqua Entertainment Center**

**Location:** 923 W. Pacheco Blvd. Los Banos, CA 95635

**Phone:** 209-710-4988

**Website:** none

---

## **Bellevue Bowl**

**Location:** 785 Bellevue Rd. Atwater, CA 95301

**Phone:** 209-358-6466

**Website:** <https://bellevuebowl.com/>

---

## **Black Oak Lanes**

**Location:** 19400 Tuolumne Rd. N. Sonora, CA 95370

**Phone:** 209-948-9419

**Website:** <https://www.blackoakcasino.com/bowling/>

---

## **Bowlero Manteca**

**Location:** 1251 E. Yosemite Ave. Manteca, CA 95336

**Phone:** 209-824-2889

**Website:** <https://www.bowlero.com/location/bowlero-manteca>

---

---

## Dublin Rockin' Jump

**Location:** 5875 Arnold Rd. Dublin, CA 94568

**Phone:** 209-391-0270

**Website:** <https://rockinjump.com/dublin/>

---

## Modesto Fun Works

**Location:** 4307 Coffee Rd. Modesto, CA 95357

**Phone:** 209-549-7888

**Website:** <https://funworksfuncompany.com/>

---

## Pacific Avenue Bowl

**Location:** 5939 Pacific Ave. Stockton, CA 95207

**Phone:** 209-477-0267

**Website:** <http://www.pacificbowl.com/>

---

## Rockin' Jump

Two Locations Modesto and Dublin. Rockin' Jump in Modesto is currently closed.

**Location:** 1700 McHenry Ave. Modesto, CA 95350

**Phone:** 209-391-0270

**Website:** <https://rockinjump.com/modesto/>

---

## Ten Pin Fun Center

\*\*\*Temporarily Closed

**Location:** 3700 Countryside Dr. Turlock, CA 95382

**Phone:** 209-850-1222

**Website:** <https://tenpinfun.com/>

---

## West Lane Bowl (Stockton)

**Location:** 3900 West Lane Stockton, CA 95204

**Phone:** 209-466-3317

**Website:** <http://westlanebowl.com/>

---

## West Valley Bowl (Tracy)

**Location:** 2365 East St. Tracy, CA 95376

**Phone:** 209-835-5262

**Website:** <https://www.westvalleybowl.com/>

---

## Yosemite Lanes

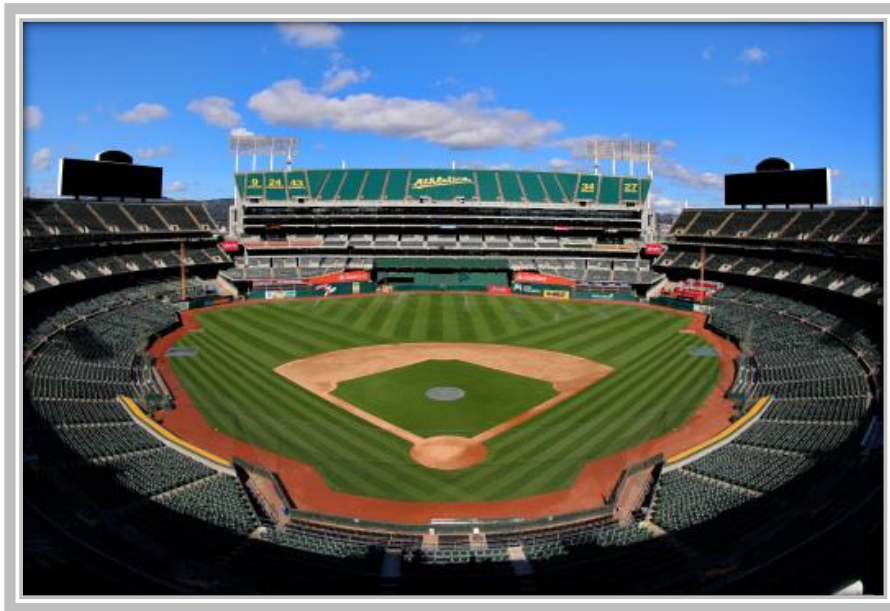
Open Monday-Sunday 8:00am-3:00pm.

**Location:** 2031 Yosemite Blvd. Modesto, CA 95354

**Phone:** 209-524-9161

**Website:** <http://yosemitelanes.com/>

# Chapter Nine



## Professional Sports Teams in Greater Yosemite Council



---

## Golden State Warriors (Basketball)

Chase Stadium.

**Location:** 1 Warrior Way San Francisco, CA 94158

**Phone:** None

**Website:** <https://www.nba.com/warriors/> or <https://www.chasecenter.com/home>

---

## Modesto Nuts Pro Baseball Club

John Thurman Field.

**Location:** 601 Neece Dr. Modesto, CA 95351

**Phone:** 209-572-4487

**Website:** <https://www.milb.com/modesto>

---

## Oakland Athletics (Baseball)

Ring Central Coliseum.

**Location:** 7000 Coliseum Way Oakland, CA 94621

**Phone:** None

**Website:** <https://www.mlb.com/athletics/> or <https://www.mlb.com/athletics/ballpark>

---

## Sacramento Republic (Soccer)

**Location:** 1050 20<sup>th</sup> St. #200 Sacramento, CA 95811

**Phone:** None

**Website:** <https://www.sacrepublicfc.com/>

---

## San Francisco Giants (Baseball)

Oracle Park Stadium.

**Location:** 24 Willie Mays Plaza San Francisco, CA 94107

**Phone:** None

**Website:** <https://www.mlb.com/giants> or <https://www.mlb.com/giants/ballpark>

---

## San Francisco 49ers (Professional Football)

**Location:** 4900 Marie P. DeBartolo Way Santa Clara, CA 95054

**Phone:** None

**Website:** <https://www.49ers.com/> or <https://www.levisstadium.com/>

---

## San Jose Earthquakes (Soccer)

**Location:** 1123 Coleman Ave. San Jose, CA 95110

**Phone:** None

**Website:** <https://www.sjearthquakes.com/earthquakesstadium>

---

## San Jose Sharks (Hockey)

Sharks play at SAP Center.

**Location:** 525 W. Santa Clara St. San Jose, CA 95113

**Phone:** None

**Website:** <https://www.nhl.com/sharks> or <http://www.sapcenter.com/teams/detail/san-jose-sharks>

---

## **Stockton Heat (Hockey)**

Stockton Arena.

**Location:** 248 W. Fremont Stockton, CA 95203

**Phone:** 209-373-1400

**Website:** <https://stocktonheat.com/>

---

## **Stockton Kings (Basketball)**

Stockton Arena.

**Location:** 248 W. Fremont Stockton, CA 95203

**Phone:** 209-360-2224

**Website:** <https://stockton.gleague.nba.com/>

---

## **Stockton Ports (Baseball Team)**

Banner Island Ballpark.

**Location:** 404 West Fremont St. Stockton, CA

**Phone:** 209-644-1900

**Website:** <https://www.milb.com/stockton>

---

## **Turlock Cal Express (Indoor Soccer Team)**

Turlock Indoor Arena.

**Location:** 500 S. Center St. Turlock, CA 95380

**Phone:** 209-634-5181

**Website:** <https://www.turlockexpress.com/tickets>

# Chapter 10



## Activities Outside of Greater Yosemite Council





---

### **Black Chasm**

The Black Chasm offers sites unlike any other. Most caves have stalactites and stalagmites. Black Chasm has helictites, beautiful, twisted crystals that are only in 5% of the Earth's caves. You can also go on the Miner's Trail to see the beautiful sites in Volcano, CA as well as learning the history of the gold rush miners.

**Location:** Volcano, CA 95689

**Phone:** 888-488-1960

**Website:** <https://cavetouring.com/about-black-chasm>

---

### **Cache Canyon River Trips**

Come for the day or a weekend getaway. Our one or two-day whitewater rafting excursions are second to none. Your adventure will take you on a self-guided tour down this action-packed river in the beautiful Cache Canyon. The river offers class 2 and 3 rapids with a perfect balance of calm waters and majestic scenery suitable for most experience levels. Whether you are a first-time rafter or an experienced whitewater enthusiast, Cache Canyon River Trips has it all! 1-day rafting trip is \$79.00, and the 2-day rafting trip is \$179.00.

**Location:** Rumsey, CA 95679

**Phone:** 530-796-3091

**Website:** <https://www.cachecanyon.com>

---

### **California Cavern, State Historic Landmark**

Walk Tour Cost: Adults (13 and up): \$18.50 | Children (5-12): \$10.00 (Cavern tours given every hour on the hour.) Wild Cave Trips: The 2-hour Mammoth Cave Expedition available for ages 8 and up is a favorite amongst scout groups and features off-trail cave exploring with only cave helmet lights to illuminate the way. It is a fun adventure and the perfect introduction to the sport of caving. Additional activities for kids: above ground-a popular activity for kids, families are gold panning and gemstone mining in their flume system right next to the visitor's center and gift shop which features fantastic nature-store-style. Lots of merchandise, fun, educational information and enjoyable for the entire family.

**Location:** 9565 Cave City Rd. Mountain Ranch, CA 95246

**Phone:** None

**Website:** <https://www.gocalaveras.com/travel-directory/califronia-cavern/>

---

### **Fresno Chaffee Zoo**

Admission fees are \$14.95 for adults and \$8.95 for children ages 2-11. Parking is \$5.00. Group rates are available.

**Location:** 894 W. Belmont Ave. Fresno, CA 93728

**Phone:** 559-498-5910

**Website:** <https://www.fresnochaffeezoo.org/plan-your-visit/>

---

### **Great Wolf Lodge Water Park Northern California**

The Great Wolf Lodge is a Water Park with attractions. Grand Opening is October 28, 2020.

**Location:** 19088 McKinley Ave. Manteca, CA 95337

**Phone:** 888-966-9653

**Website:** <https://www.greatwolf.com/northern-california/waterpark-attractions/activities>

---

### **IFly- Sacramento**

Indoor Skydiving – The most technologically advanced body flying tunnels in the world.

**Location:** 118 Harding Blvd. Roseville, CA 95678

**Phone:** 916-836-4359

**Website:** <https://www.iflyworld.com/sacramento/>

---

### **Mercer Caverns**

Enjoy the sights of the Mercer Caverns. There are also fun side activities like gem mining!

**Location:** 1665 Sheep Ranch Road Murphys, CA 95247

**Phone:** 209-728-2101

**Website:** <http://mercercaverns.net/index.html>

---

### **Moaning Caverns**

Whether you want to see the sights, pan for gold, or throw some axes, the Moaning caverns have activities galore for you and your Scouts.

**Location:** 5350 Moaning Cave Rd, Vallecito, CA 95251

**Phone:** 209-736-2708

**Website:** <https://moaningcaverns.com/>

---

### **Oakland Zoo**

Plan your Groups Visit: Group Reservations insures your group admittance at a discounted rate. Plan by visiting our website for upcoming events, maps, animal feedings and scavenger hunts. Admission Fees: ages 2-14 \$15.00 ages 15-64 \$19.00 Car Parking is \$10.00.

**Location:** 9777 Gold Links Rd. Oakland, CA 94605

**Phone:** 510-632-9525

**Website:** <https://www.oaklandzoo.org/admission#Admission-Fees>

---

### **Pixie Woods**

Currently closed. Discover Pixie Woods' enchanted forest and magical pathways for children of all ages! Be transformed by a world of imagination and wonder – create memories to last a lifetime.

Admission (Cash or check payments only)

**Location:** 3121 Monte Diablo Ave. Stockton, CA 95203

**Phone:** 209-915-9834

**Website:** <http://pixiewoods.org/>

---

### **River Fox Train (Railbikes for Adventure)**

Minimum age requirement of 6 years old. 250lb weight limit. Helmets are included but you may bring your own if you prefer. Closed toe shoes are required as well as wearing your mask when you enter the park and during check in and instruction. All railbikes will have a generous gap to ensure social distancing is followed. Rate is \$99.00 per bike; each bike has room for two riders.

**Location:** 18095 County Road 117, West Sacramento, CA 95691

**Phone:** 800-866-1690

**Website:** <https://www.riverfoxtrain.com/railbikes/>

---

### **Rocklin Quarry Park**

Quarry Park Adventures, located in the 160-year-old Quarry District in downtown Rocklin, California, is a one-of-a-kind outdoor experience with adventure activities that are fun for the whole family. From ziplines and free-fall jumps to tranquil paddle boat rides, a truly incredible kids adventure area, and more Quarry Park Adventures is an unforgettable destination for people seeking a fun, easily accessible adventure in Northern California.

**Location:** 5373 Pacific St. Rocklin, CA 95677

**Phone:** 916-824-1680

**Website:** <https://quarrypark.com/>

---

### **Roseville TopGolf**

Topgolf offers a wide selection of games that utilize micro-chipped golf balls and Top tracer technology (select venues) to keep track of every shot. Player's shots will be relayed back to their bay screen showing the accuracy and distance of each ball. Our giant targets make it fun for everyone – Guests of all ages and skill levels can score! Check out a brief overview of some Topgolf games below and get ready to tee it up and let it fly. They offer half price Tuesdays and \$15.00 unlimited play.

**Location:** 1700 Freedom Way Roseville, CA 95678

**Phone:** 916-200-1002

**Website:** <https://topgolf.com/us/roseville/>

---

### **Sacramento Zoo**

General admission is \$17.50. Youth admission ages 2-11 is \$12.50.

**Location:** 3930 W. Land Park Dr. Sacramento, CA 95822

**Phone:** 916-808-5888

**Website:** <https://www.saczoo.org/visit/plan-your-visit/>

---

### **San Francisco Zoo**

Admission for group rates; Ages 4-14 are \$14.00, ages 15 and up are \$20.00.

**Location:** Sloat Blvd. & Great Hwy San Francisco, CA 94132

**Phone:** 415-753-8141

**Website:** <http://www.sfzoo.org/visit/group-reservations.html> or  
<http://www.sfzoo.org/learn/feildtrip.html>

---

**Santa Cruz Beach Boardwalk.**

**Location:** 400 Beach Street Santa Cruz, Ca 95060

**Phone:** 831-423-5590

**Website:** <https://beachboardwalk.com/Directions>

---

**Skunk Train**

The health of our staff, guest, and community is our primary concern. We have resumed operations and are requiring the observation of social distancing of at least 6' and mandatory facial coverings. Step back in the time for a Magical ride through the Redwoods on the world-famous skunk train. Since 1885, the Historic Skunk has made its way through old growth, redwood groves, over scenic trestle bridges, through spectacular tunnel, and into the heart of the Noyo River Canyon. Today riders enjoy the same pristine views that have remained largely unchanged for well over a century.

**Location:** 100 West Laurel St. Fort Bragg, CA 95437 or 299 East Commercial St. Willits, CA 95490

**Phone:** None

**Website:** <https://www.skunktrain.com/>

---

**Sutter Fort State Historic Park**

Sutter's Fort State Historic Park is alive with activity throughout the year. Regular living history events recreate life and activities of Sutter's time. "Hands-on History Days" feature costumed staff demonstrating the tools, skills, food, and games of early Californians. Educational programs are offered for school groups and Scouts. For schedules and details, please visit [www.parks.ca.gov/suttersfort](http://www.parks.ca.gov/suttersfort).

**Location:** 2701 L St. Sacramento, CA 95816

**Phone:** 916-445-4422

**Website:** <https://www.parks.ca.gov/?pageid=485>

---

**USS Hornet Sea, Air, And Space Museum**

Currently, the USS Pampanito Overnight Program is open to all organized youth groups that meet our insurance requirement and group ratio rules. We require an adult/child ratio of 1:6, and a minimum of 7 adults with any-sized group. The largest group we can accommodate is 48 visitors. The minimum age to participate is 6 years old. We do not allow siblings unless they are a member of the visiting group such as a Boy Scout or Girl Scout Pack or Troop. Please refer to the manual for details.

FRIDAY – SUNDAY

The cost to participate in a weekend overnight encampment is a flat fee of \$1,250 for up to 25 participants. Add \$50 per person for 26-48 participants, maximum group size is 48.

**You are required to furnish the following:** A current, valid insurance certificate. If your group is a California Boy or Girl Scouts of America group, we may have a copy of your Council office's Certificate of Insurance on file. Please contact Education Director Dylan Drovdal (415-775-1943x1056) [ddrovdal@maritime.org](mailto:ddrovdal@maritime.org)

- **(Important: The Certificate of Insurance should be in the amount of \$1 million for bodily injury and property damage and should list the San Francisco Maritime National Park Association as an additional insured.)**
- Complete Medical and Liability forms for all participants, both adult AND minor. (these can be found in the Overnight Encampment Manual).
- Signed acknowledgement of the Safety Procedures and Rules of Conduct. This form is also located in the Manual and due on the day of the program.
- Night Watch Roster (this is a **required** activity by the adults)

**Location:** Pier 45 in San Francisco off the Embarcadero

**Phone:** 415-775-1943 extension 1056

**Website:** <https://maritime.org/education/edupampanito/pampanito-overnights/>

---

### **Whitewater Adventures**

Located in Snow Mountain National Monument Park 1-mile past Rumsey, CA. Bring your friends, family, company, or club for a whitewater adventure through the wilderness. Splash along the Upper Cache Creek on an exciting one-day or two-day trip complete with wildlife sightings, picnic lunches, thrilling rapids, and relaxing camping under the stars. Plan your California river rafting adventure today! 1-day rafting trip is \$89.00, and the 2-day rafting trip is \$189.00.

**Location:** Rumsey, CA 95679

**Phone:** 916-643-9847

**Website:** <https://www.gotwhitewater.com>

# Chapter Eleven



## Farms, Nurseries, & Fisheries Greater Yosemite Council



---

## Dell’Osso Family Farms

Corn Maze, Haunted Castle, Dell’Osso Express Train, Hay Ride, Mystery Tour, Scarecrow Ride, Goat Walk, Duck Races, Tire Play Area, Dell’Osso Speedway, Animal Zoo, Ball Shoot Arena, Tire Island, Lawn Games, \*Walk the Plank, Tire Island, Super Slide, Kiddie Play Land, Kiddie Ferris Wheel, Spinning Pumpkins, Pillow Jumping, Children’s Interactive Pirate Show, Pig Races & Entertainment. Parking is always free. Below attractions not included with General Admission.

Gem Mining \$6.00, Pumpkin Blasters \$7.00, Zip Lines \$10.00/\$15.00, Pony Rides\$7.00, Pumpkin Painting \$5.00, Zip Lines opens at 3:00pm weekdays, and Gem Mining opens at 11:00am.

General Admission Prices are Monday – Thursday \$15.95. Friday – Sunday \$19.95.

**Location:** 501 S. Manthey Rd. Lathrop, CA 95330

**Phone:** None

**Website:** <https://dellossofarm.com/>

---

## Merced Gardens and Nursery

Open Daily from 9:00am-5:00pm.

**Location:** 1007 Tahoe St. Merced, CA 95348

**Phone:** 209-384-0513

**Website:** <http://mercedgardens.com/>

---

## Mokelumne River Hatchery

CDFW is temporarily closing its high public use areas. Formal Tours: Group tours are offered to schools, clubs, scouts, and other organized groups looking for an educational experience. To schedule a tour call 209-759-3383, at least two weeks in advance.

**Location:** 25800 N. McIntire Rd. Clements, CA 95227

**Phone:** 209-759-3383

**Website:** <https://wildlife.ca.gov/Fishing/Hatcheries/Mokelumne-River>



---

## Morris Nursery

Open 9:00am – 4:00pm Daily.

Mask Required in store at checkout.

Contact: Dave Provost Master Gardener will help the Scouts and learn about compost and plants.

**Location:** 1837 Patterson Rd. Riverbank, CA 95367

**Phone:** 209-527-5553

**Website:** <https://www.morrisnursery.com/>

---

## Tracy Nursery Gardens

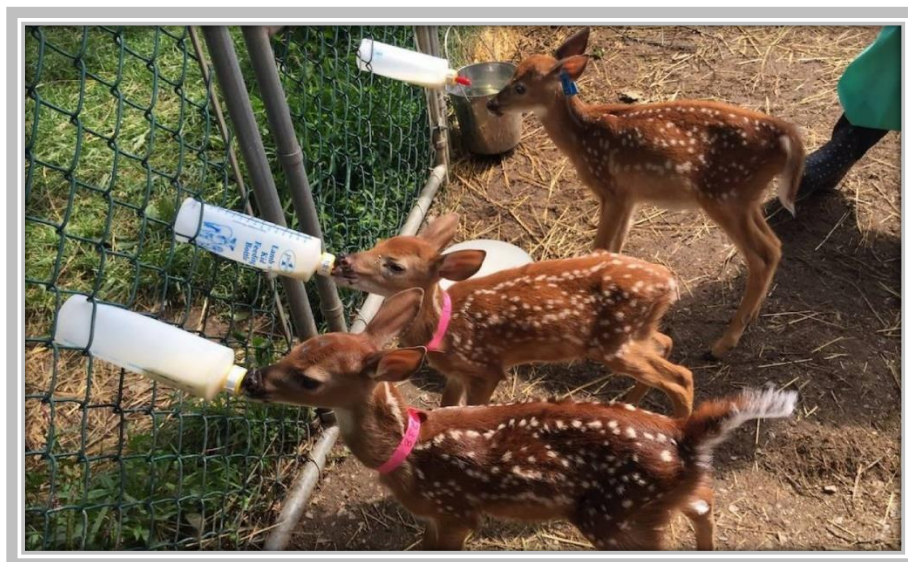
Throughout the year we feature many classes themed for the season. Garden Crafts, Children Crafts, Citrus Tasting, and much more. Please refer to our <https://tracynurseryandgarden.com/classes-%26-events-calendar> for more information.

**Location:** 29181 S. Lehman Rd. Tracy, CA 95304

**Phone:** 209-833-1093

**Website:** <https://tracynurseryandgarden.com/everyone>

# Chapter Twelve



## Animal Sanctuaries in Greater Yosemite Council



---

## Harvest Home Animal Sanctuary

To Bolster compassion and kindness for animals, harvest home Animal Sanctuary provided free educational presentations to local youth and community groups on the topics of humane care and animal welfare. We are happy to host scout Troops for service days and tailor projects for your badge-earning needs. Email [rescue@harvesthomesanctuary.org](mailto:rescue@harvesthomesanctuary.org) for more information due to covid-19 restrictions.

**Location:** 14741 S. Wing Levee Rd. Stockton, CA 95206

**Phone:** 209-244-7174

**Website:** <http://harvesthomesanctuary.org/education/>

---

## Stanislaus Wildlife Care Center

Happy to give talks to community groups and scouts. The presentations must be in a public building such as a church or other hall.

**Location:** 1220 Geer Rd. Hughson, CA 95326

**Phone:** 209-883-9414

**Website:** <http://stanislauswildlife.org/1mission.html>

# Chapter Thirteen



## Shooting Ranges in Greater Yosemite Council



---

## Escalon Sportsman Club

Please contact Ray Lindsey Shooting Sports Director for the Greater Yosemite Council, BSA. Ray is a member of the Escalon Sportsmen Club and can reserve the range for scouts use or firearm and marksmanship training. Ray Lindsey email at [rlindsey2000@sbcglobal.net](mailto:rlindsey2000@sbcglobal.net) or call 209-602-0103.

**Location:** 25195 E. River Rd. Escalon, CA 95320

**Phone:** 209-838-3351

**Website:** <https://sites.google.com/site/escalonsports/>

---

## Manteca Sportsman Inc.

Youth Programs: Manteca Sportsmen Inc (MSI) has several programs specifically designed for our communities' youth such as 4-H, Sea Cadets, Junior ROTC, Scouts groups. Nearly all youth activities are at no cost and may use the MSI club equipment. Friday Night Kid's Shoot: One of our most popular programs is an open to all. Safety and shooting activity for youth from 8-17 years old. The events are held the first Friday of every month beginning at 6:00pm and run until about 8:00pm. Each youth must be accompanied by a parent or guardian. The program teaches gun safety and shooting technique. Each youth will have the opportunity to safely shoot a .22 rifle at the club indoor range. Please contact the club at 209-823-7919 if interested in youth programs.

**Location:** 30261 Airport Wat Manteca, CA 95337

**Phone:** 209-823-7919

---

## Oakdale Sportsman Club

Please contact Ray Lindsey Shooting Sports Director for the Greater Yosemite Council, BSA. Ray is a member of the Oakdale Sportsmen Club and can reserve the range for scouts use or firearm and marksmanship training. Ray Lindsey email at [rlindsey2000@sbcglobal.net](mailto:rlindsey2000@sbcglobal.net) or call 209-602-0103.

**Location:** 840 N. Stearns Rd. Oakdale, CA 95361

**Phone:** 209-847-6363

**Website:** <http://oakdalesportmensclub.com/>

---

## Safety First Shooting Association

Safety First Shooting Association, Inc is pleased to announce a new opportunity for our community youth to learn firearm safety and marksmanship! We will be offering classes from 2-4PM on the 2<sup>nd</sup> Saturday of each month for youth who sign up. We only require that the youth must be accompanied by a parent or guardian who must remain present for the class.

**Location:** 11584 Shaffer Rd. Winton, CA 95388

**Phone:** 209-617-1718

**Website:** <https://safetyfirstshooting.net/>

**Website:** <http://www.mantecasportsmeninc.org/youth-programs/>

---

## Turlock Sportsman Club

Call for an appointment and price ranges.

**Location:** 13949 Carpenter Rd. Crows Landing, CA 95313

**Phone:** 209-634-3951

**Website:** None

# Chapter Fourteen



## Winter Sports, Skating Rinks, & Skiing Venues in Greater Yosemite Council



---

## Badger Pass Ski Resort

Badger Pass Ski Area has it all and makes it easy from getting here, to renting equipment, and to taking lessons. You will find groomed trails for cross-country skiers, chairlifts that take Alpine skiers to test their limits, and a tubing area where the whole family can experience the thrills together.

Activities to do while at Badger Pass: Back Country Ski Tours, Cross Country Skiing, Cross Country Skiing to Glacier Point, downhill snowboarding, snowtubing, snowshoes. For Group Rates call 888-413-8869 or more information click link below:

[https://reservations.ahlsmsworld.com/Yosemite/?\\_ga=2.75098711.472944814.1597784701-863381649.1597784701](https://reservations.ahlsmsworld.com/Yosemite/?_ga=2.75098711.472944814.1597784701-863381649.1597784701).

**Location:** 7082 Glacier Point Rd. Yosemite National Park, CA 95384

**Phone:** 209-372-1000

**Website:** [https://www.travelyosemite.com/winter/badger-pass-ski-area/?utm\\_source=google&utm\\_medium=places&utm\\_campaign=google\\_places](https://www.travelyosemite.com/winter/badger-pass-ski-area/?utm_source=google&utm_medium=places&utm_campaign=google_places)

---

## Dodge Ridge Ski Resort

Great rates for groups of 15 or more! Every year Dodge Ridge works with hundreds of schools, scouts, churches, and family groups to create the best experience possible. Staff is committed to identify your unique needs and customizing packages for your group that will accommodate ages 6 and up, at any ability level. Contact the sales department at 209-536-5329 or [groupsales@dodgeridge.com](mailto:groupsales@dodgeridge.com).

**Location:** 1 Dodge Ridge Rd. Pinecrest, CA 95364

**Phone:** 209-965-3474

**Website:** <https://www.dodgeridge.com/tickets-passes/groups/>

---

## Iceland Ice Skating Rink (Sacramento)

Sponsored lessons are also available for community groups based on ice availability. Please contact our Skating Director, Terrie Kerth for more information. Email at [terrie@skatesacramento.com](mailto:terrie@skatesacramento.com) or call Iceland at 916-925-3121. Lots of free parking in the back of alley off Edgewater Rd.

**Location:** 1430 Del Paso Blvd. Sacramento, CA 95815

**Phone:** 916-925-3121

**Website:** <https://skatesacramento.com/lessons/>



## Kirkwood Mountain Resort

Ski & Ride Groups: Whether you are looking to build new bonds, inspire a group of scouts, Kirkwood is the perfect place for groups to congregate. During the summer, Kirkwood offers many activities: Hiking, biking, and disc golfing. Mountain Trails are now open for public access and disc golf is open for play. For group rates please contact Receptionist at 209-258-7332.

**Location:** 1501 Kirkwood Meadows Dr. Kirkwood, CA 95646

**Phone:** 209-258-6000

**Website:** <https://kirkwood.com/explore-the-resort/about-the-resort/groups-and-weddings.aspx>

---

## Modesto on Ice

Skate Sessions are 90 minutes long and cost \$12.00 for children 3-12 years old \$15.00 for ages 13-up. Price includes rental of skates. Every new Skater must sign a waiver.

**Location:** 1131 11<sup>th</sup> St. Modesto, CA 95354

**Phone:** 209-300-3693

**Website:** <https://www.modestoonice.com/>

---

## Oak Park Ice Rink (Stockton)

Oak Park Ice is the Central Valley's premier ice skating rink offering public skating, ice hockey, figure skating, and curling.

Oak Park Ice Rink opened in 1970, replacing Stockton's previous arena that ceased operation at the San Joaquin County Fairgrounds. Oak Park Ice Rink is part of only a handful of public ice-skating rinks in California. Party Room is available for youth groups at \$50.00 an hour.

**Location:** 3545 N. Alvarado St. Stockton, CA 95204

**Phone:** 209-937-7433

**Website:** <https://oakparkicerink.com/>

---

## Turlock Fields of Ice

The Details: Bring your youth group, sorority, club, 4-H, FFA Scout Group of 25 or more for a fun holiday outing. Group rates are available Monday-Thursday (excluding Dec 22- Jan 2) advanced reservations are required. For groups ages of 3-12 please call Karen Macedo at 209-649-7078 for reservations.

**Location:** 716 N. Daubenger Rd. Turlock, CA 95380

**Phone:** 209-649-7078

**Website:** <https://turlokfieldsofice.com/group-packages/>

# Chapter Fifteen



## Interesting Businesses to Visit in Greater Yosemite Council



---

## Alpine Climbing Adventure Fitness

The gym will offer free weights, cardio equipment, yoga, high intensity interval training and cross functional fitness classes. It will host competitive and recreational youth programs. It will also include 16,500 sq feet of climbing walls.

**Location:** 1450 Garrison Way, Ripon, CA 95366

**Phone:** 209-509-4077

**Website:** <https://climbatalpine.com/>

---

## Hilmar Cheese Company

Tours are available for scouts. Scout tours earn a Patch \$4 per scout 45-60 minutes. Tours are available after school and weekends by reservation. Choose between the tour and ice cream activity for all ages or tour and cheesemaking activity for scouts 9 year or older. To make a reservation contact Kody Stevens at 209-656-1167.

**Location:** 9001 North Lander Ave. Hilmar, CA 95324

**Phone:** 209-656-1167

**Website:** <https://www.hilmarcheese.com/visitorcenter/tour/>



# THANK YOU FOR ALL THAT YOU DO

- Greater Yosemite Council