

# WATCH OUT *for* SNAKES!

## If a SNAKE BITES you:

- Remain calm & call the Poison Help line immediately.

**1-800-222-1222**

- Immobilize the bitten limb or body part at or slightly below heart level.
- Note the time the bite happened.
- Remove all tight clothing or jewelry.
- Wash the bite area with soap and water if it does not cause delay.
- Get to a hospital as quickly as possible, preferably by ambulance.

*Do*

- Don't try to capture or kill the snake, but try to remember its color and shape so you can describe it, which will help in your treatment. If you can do so safely and without delay, take a photo.

- Don't use a tourniquet.

- Don't use any form of suction.

- Don't cut the wound.

- Don't apply heat, cold, electricity or any substances to the bite.

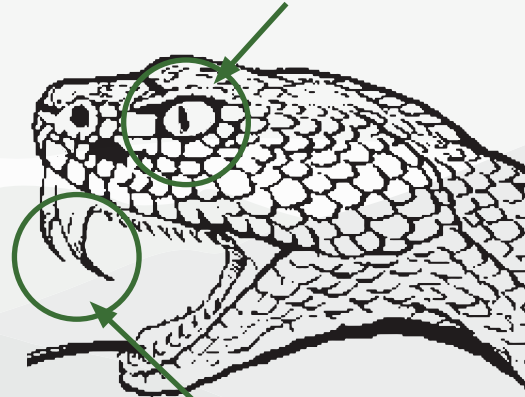
- Don't drink caffeine or alcohol or take any drugs.

*Don't*

## IS IT *Venomous?*

### COPPERHEAD, COTTONMOUTH AND RATTLESNAKES

ELLIPTICAL PUPILS



FANGS



TRIANGULAR HEAD

### CORAL SNAKE

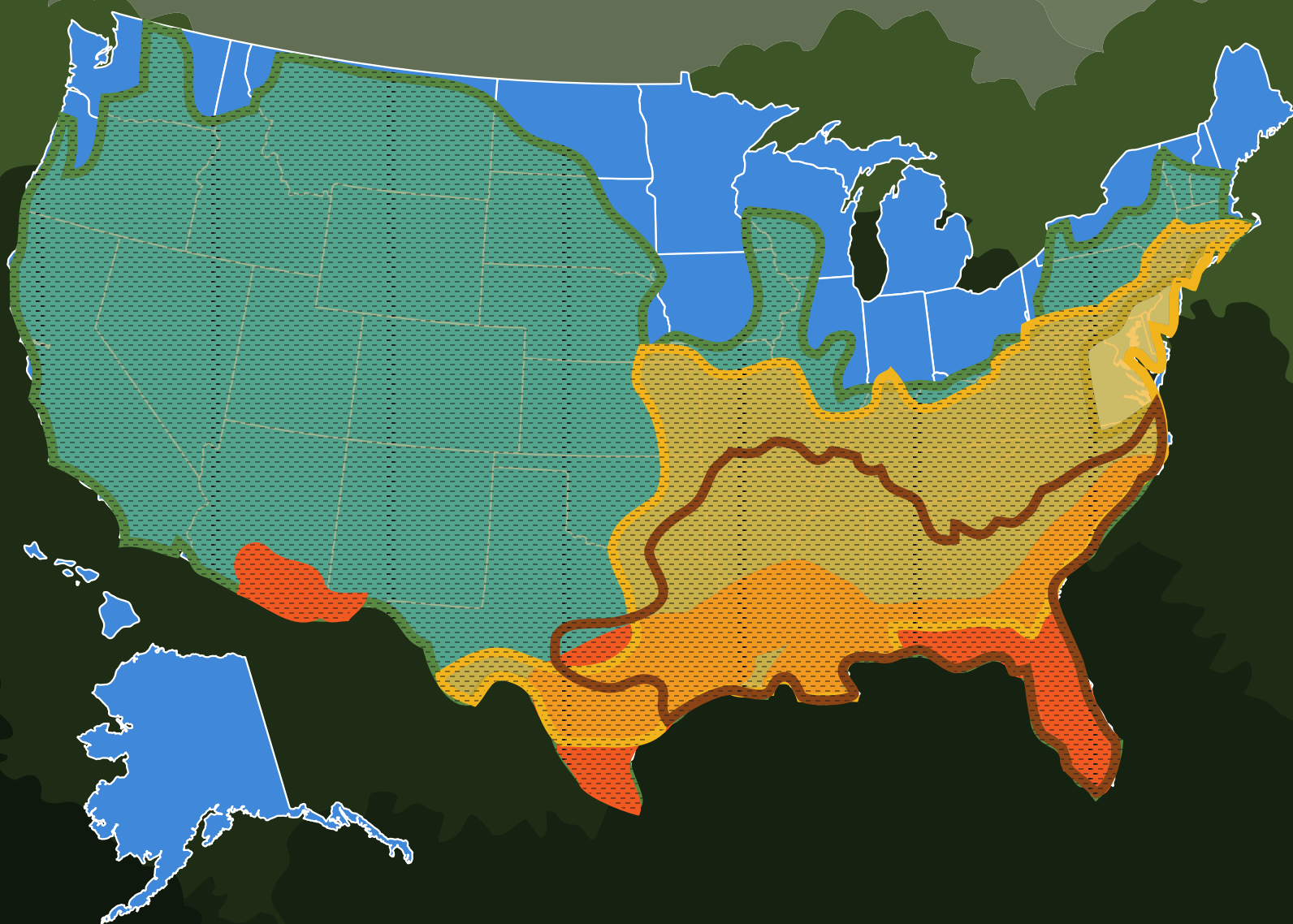
ROUNDED HEAD

RED AND BLACK BANDS DIVIDED BY A NARROW, YELLOW BAND



There are various types of these snakes in different regions of the United States. While their general features are the same, there are some minor differences in appearance.

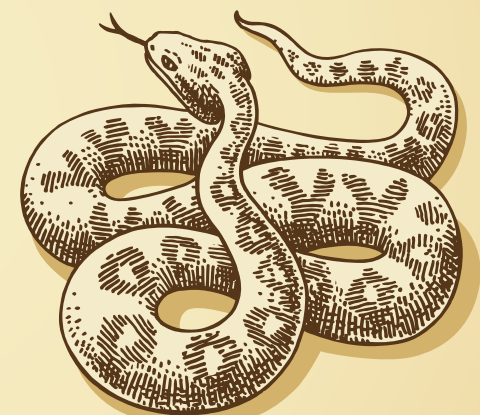
**FOR MORE INFORMATION CALL 1-800-222-1222**



■ COPPERHEAD SNAKE ■ COTTONMOUTH SNAKE ■ CORAL SNAKE ■ RATTLESNAKE

## Symptoms and Signs of a SNAKE BITE:

- Intense pain spreading out from the bite
- A scratch or puncture(s) from fangs
- Progressive swelling and bruising where bitten
- Sweating
- Weakness
- Nausea and vomiting
- Muscle twitching
- Metallic taste in mouth
- Light-headedness or loss of consciousness



Want more info?

SCAN THIS:



Program the Poison Help number into your phone

SCAN THIS:

