

## Pohono Trail

**Distance:** 13 miles.

**Type of trip:** Point to point.

**Difficulty:** Strenuous, no matter which trailhead you start from, you'll have a strenuous climb for at least a mile at the beginning of the hike. Starting at Glacier Point is the least difficult option. The Tunnel-View-to-Glacier-Point hike is far more grueling than the reverse direction.

**Elevation:** +5622 ft., - 3270 ft. including Sentinel Dome; +5289 ft., - 3270 ft. without it.

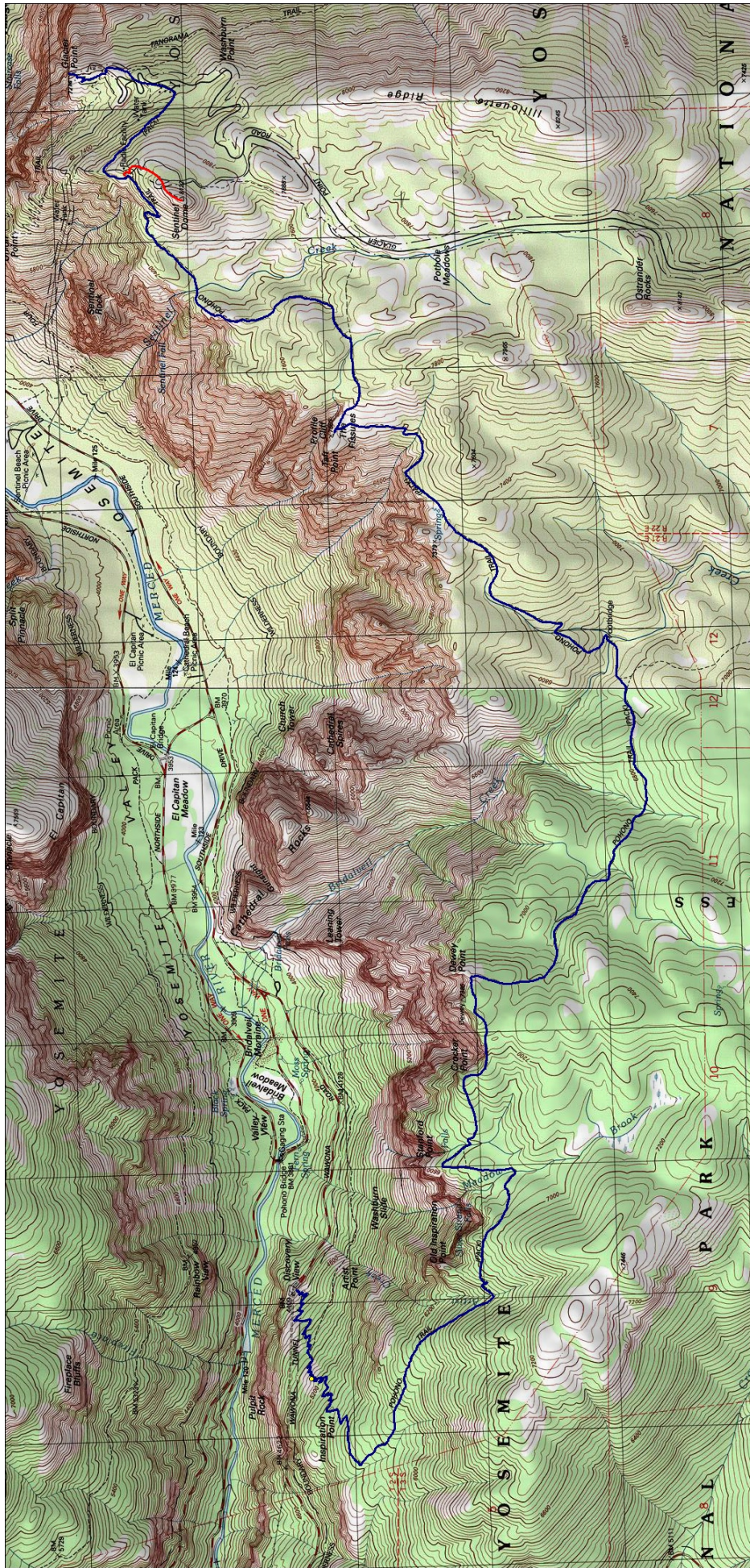
**Hiking Time:** 5 - 10 hours

**Begin at:** Most people do this hike one way from Glacier Point to Yosemite Valley, which means parking in the valley and taking the Glacier Point bus from the Yosemite Lodge up to the trailhead at Glacier Point. Glacier Point is at the terminus of the 16-mile Glacier Point Road. If you are going in the opposite direction you will park at Tunnel View. From Yosemite Valley, you'll want to take Highway 41 south. Head toward the west end of the valley and follow the signs for Highway 41 and Bridalveil Fall. The Tunnel View is two miles up the road.

**Seasonality:** The trail is only accessible when the Glacier Point Road is open, typically from mid-May until early November, and there will likely be snow hiding the trail for the first few weeks after the road opens.

**Trail Notes:** This east-west hike along Yosemite Valley's south rim, going from Glacier Point to the Tunnel View (or, less frequently, vice versa). Along the way you'll pass Glacier, Taft, Dewey, Crocker, Stanford, and Inspiration Points, along with Sentinel Dome and the Tunnel View. You'll have views of all Yosemite Valley's great natural landmarks: Vernal, Nevada, Yosemite, and Bridalveil Falls; Half Dome, Sentinel and Cathedral Rocks, El Capitan, and more. If your timing is right, though, you will see numerous wildflowers.

<http://www.yosemitedhikes.com/glacier-point-road/pohono-trail/pohono-trail.htm>



Map created with [TOPOR](http://www.nationalgeographic.com/topo) © 2005 National Geographic ([www.nationalgeographic.com/topo](http://www.nationalgeographic.com/topo))

